

Recommended Route

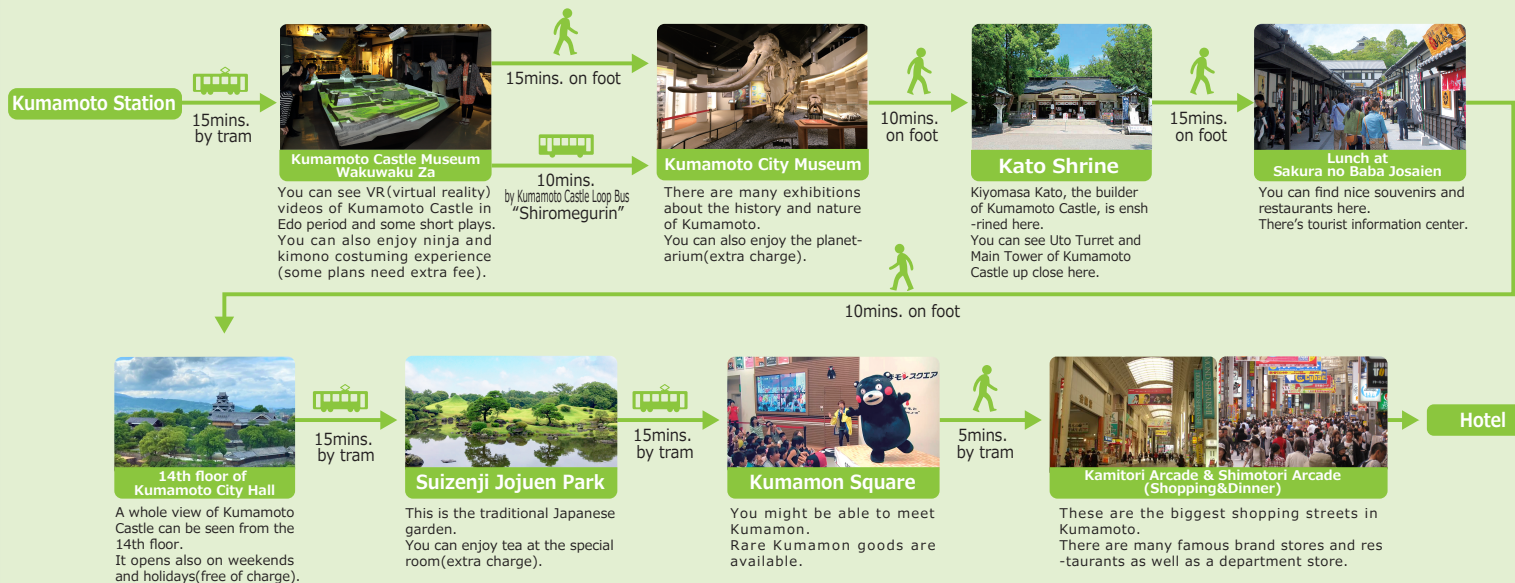
Course1 (about 3h30mins)

Kumamoto Castle & Suizenji Jojuen Park



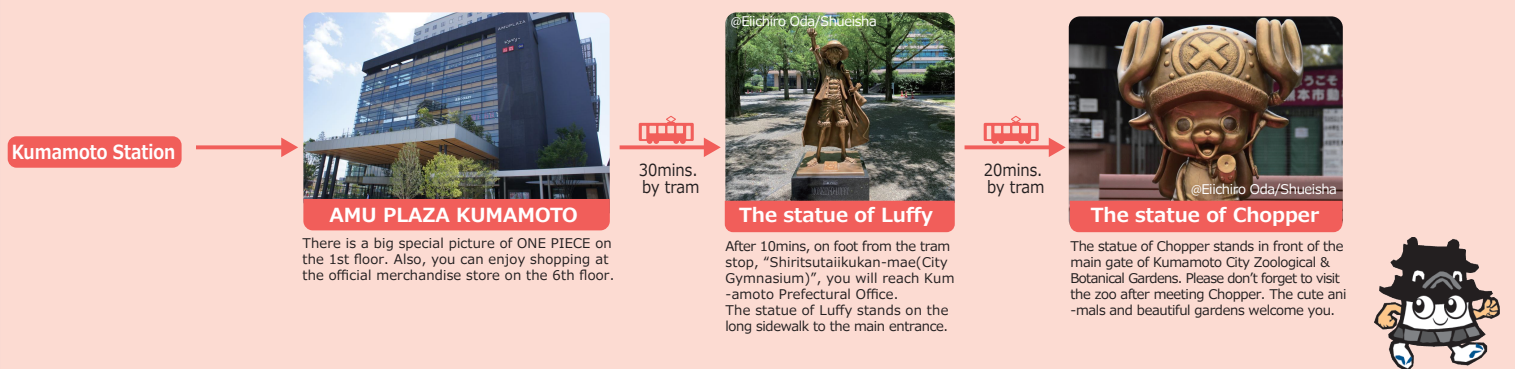
Course2 (about 7h)

Kumamoto Castle, Suizenji Jojuen Park & more



Course3 (about 4h)

ONE PIECE! ONE PIECE! ONE PIECE!



Course4 (about 3h)

Musashi Miyamoto

