



# KUMAMOTO Gourmet

**Coupon !**



# Gourmet Food

## of Kumamoto Local



### Karashi Renkon

Lotus Root with Japanese Mustard

The dish is made by deep-frying lotus roots filled with mustard flavored miso. It makes a beautiful saké accompaniment.

Eat here.

11 12 13 14 16 18 19 20 21 22  
24 25 26 28 29 30 31 32 33 38  
40 41 42 43 44 45 46 50 51 52 55 56

Buy here.

5 16 17



### Hitomoji no Guruguru

Boiled Hitomoji onion tightly wound up and served with miso seasoned with vinegar.



Eat here.

11 12 13 14 16 18 19 20 21 22  
24 25 26 28 29 31 33 38 41 42  
43 44 45 46 50 51 52 55

### Aka Ushi Beef

Aka Ushi cows drink the pure Aso water and feed on the soft grass of the plains of Aso. Aka Ushi is tender, low in fat and healthy meat. Please try Aka Ushi Beef such as steak or barbecued.

Eat here.

8 13 16 17 19 21 22 23 24 25  
27 28 31 33 34 38 40 42 44 50  
54 55 57 58

### Kumamoto Ramen

The ramen features a rich pork bone soup, straight and chewy, medium-thick noodles, and an abundance of fried garlic.

Eat here. 1 2 3 4 5 6 10

Buy here. 16



### Ikinari Dango

Sweet potato and bean paste dumpling of Kumamoto origin. "Ikinari" means sudden. It comes from we can make it quickly even if a guest suddenly visits.

Buy here. 1 8 13 16



### Taipiien

Chinese style soup noodle of Kumamoto origin. It contains healthy glass noodles and vegetables.

Eat here.

7 8 9 10 16 22 25  
Buy here. 16



### Horse Meat

Horse meat is low in calorie and high in protein. Please enjoy horse meat with various ways such as sashimi and yakiniku.

Eat here.

4 11 12 13 14 15 16 17 18 19 20  
21 22 23 24 25 26 28 29 30 31 32  
33 34 35 36 37 38 40 41 42 43 44  
45 46 48 50 51 52 53 54 55 56 57

Buy here.

9 16



### Amakusa Daioh

Amakusa Free Range Chicken.

It is also known as the phantom chicken. The meat is characterized by its firmness, bounce, and juiciness.

Eat here.

14 16 21 22 24 26 31 33 38 43 44 45 51 54







Establishments certified for infection control in Kumamoto Prefecture



Benefits you will receive by presenting this booklet.



## 1 KOMURASAKI Kamitori-chuo こむらさき 上通中央店



The garlic chips, roasted uniquely to intensify their flavor, and tonkotsu (pork bone) broth without excess oil, marry well with the smooth, medium-fine noodles. Please enjoy the taste of Kumamoto, which has been unchanged since the restaurant began in 1954.

### Recommended dishes

Osama Ramen, 800 yen  
Special Char Siu Mien, 1,200 yen  
Natto Ramen, 750 yen

ラ 11:00-15:00 F-1

8-16, Kamitori-cho, Chuoku, Kumamoto City  
TEL: 096-325-8972  
Hours: 11:00-16:00 (LO 15:30)  
18:00-22:00 (LO 21:30)  
Capacity: 40 (private rooms available)  
No parking.  
Closed at the end of the year and New Year holidays.

## 2 RAMEN AKAGUMI ラーメン赤組



For 550 yen, you can enjoy Kumamoto Ramen with fragrant roasted garlic oil at this establishment!

### Recommended dishes

Kumamoto Ramen, 550 yen.  
Yokubari Ramen, 850 yen.  
Stewed Offal, 480 yen.

ラ 11:00-23:30 (LO23:00) G-1

7-29, Kamitori-cho, Chuoku, Kumamoto City  
TEL: 096-325-8766  
Hours: 11:00-23:30 (LO23:00)  
Subject to change due to COVID-19 restrictions.  
Capacity: 25  
No parking  
open all year round

## 3 Kumamoto Tonkotsu DEN 伝統熊本豚骨 伝



Ajisen Ramen's new brand. Picture is the Kun Ramen with the tantalizing aromatic and mildly bitter dark roasted garlic oil!

### Recommended dishes

Den DX, 1,150 yen  
Den Ramen (Kumamoto Ramen), 800 yen  
Kun Ramen, 850 yen

ラ 11:30-3:00 (LO 2:30) E-4

13-4, Hanabata-cho, Chuoku, Kumamoto City  
TEL: 096-354-9822  
Hours: (Mon-Sat) 11:30-3:00 (LO 2:30)  
(Sun & public holidays) 11:30-1:00 (LO 0:30)  
Capacity: 16 No parking  
Closed on New Year's day.

## 4 Koku Ryu Kou 黒龍紅



Kumamoto Tonkotsu Ramen is well-loved by local customers. The restaurant also offers many original dishes, including tomato ramen and handmade gyoza sticks.

### Recommended dishes

Char Siu Mien, 1,250 yen  
Hand-prepped gyoza sticks, 450 yen  
Assortment of horse meat sashimi, 2,200 yen

ラ 11:00-14:00 C-4

2-5-7, Kasuga, Nishi-ku, Kumamoto City  
TEL: 096-353-0929  
Hours: 11:00-14:00 (LO 13:30)  
17:00-24:00 (LO 23:30)  
Capacity: 25  
Parking available  
Closed on Sundays

## 5 Kumamoto Ramen Kokutei 熊本ラーメン専門店 黒亭本店

Established in 1957. The restaurant serves excellent ramen using a stock made with a pig's head only and house-made garlic oil.

2-1-23, Nihongi, Nishi-ku, Kumamoto City  
TEL: 096-352-1648  
Hours: 10:30-21:00 (LO 20:30)  
Capacity: 25  
Parking for 15 cars.  
Check the website for closures.

### Recommended dishes

Ramen with an egg, 1,000 yen  
Ramen, 800 yen



## 6 OCEAN'S SEVEN 熊本市動植物園内レストハウス OCEAN'S SEVEN

The restaurant has an adjoining take-out store selling hot dogs, French fries, and other snacks. We recommend the terrace seating where you can enjoy a meal while appreciating the lush green scenery!

### Recommended dishes

Loco-Moco Plate 1,200 yen  
Kid's Lunch 780 yen  
Tonkotsu Ramen 680 yen



## 7 Kourantei Shimotori-honten 紅蘭亭 下通本店

The Kourantei's main restaurant on Shimotori Street reopened in the spring of 2020. Enjoy authentic Chinese cuisine prepared by our skilled chefs in a relaxing ambiance. Table seating, tatami rooms, and private rooms are available. We cater to all kinds of requirements, including parties.

### Recommended dishes

Taipeen 980 yen  
Sweet & Sour Pork 1,340 yen  
Chilli Prawns 1,640 yen



## 8 Chinese cuisine Enen 中華旬菜 燕燕

Enjoy lovingly prepared dishes made with seasonal ingredients, including Kumamoto's famous Taipeen and Sichuan-style Ma Po Tofu.

### Recommended dishes

Ma La Tang En, 980 yen  
Sichuan-style Ma Po Tofu, 1,100 yen  
Akausi beef in garlic sauce, 2,000 yen







Establishments certified for infection control in Kumamoto Prefecture



B-5

## 9 Kairakuen 会楽園



It is said Kairakuen, established in 1933, is the origin of Taipien. It is small and cozy restaurant run by a couple. They speak only in Japanese but foreign customers also welcome.

### Recommended dishes

Taipien, 900 yen  
Almond Pudding, 300 yen  
Sweet & Sour Pork Ribs 1,200 yen

1F, Pureshiiru, 2-7-11, Shin-machi, Chuo-ku, Kumamoto City  
TEL: 096-352-2844  
Hours: 11:30-15:00  
(Subject to availability)  
Capacity: 20  
Parking available  
Closed on Mondays and 2nd, 4th, and 5th Tuesdays.



## 10 Chinese Restaurant Marumi 中国料理 まるみ



Ueki 2



Complimentary gyoza

The extensive menu includes Champon, Taipien, gyoza, ramen, and fried rice besides authentic Chinese dishes.

### Recommended dishes

Taipien, 858 yen  
Seafood Champon, 1,045 yen  
Ramen, 605 yen

440-2, Tarumizu, Ueki-machi, Kita-ku, Kumamoto City  
TEL: 096-272-4949  
0120-540-063  
Hours: 11:30-22:00 (LO 21:00)  
Capacity: 30 (private rooms available)  
Parking available (Motorcoaches may park)  
Closed on Mondays (closed on Tuesday if Monday is a public holiday)



## 11 Monaka・Agura もなか・安坐 (個室)



G-4



Monaka offers a spacious dining area with an open plan kitchen, while Anza is a private dining room with an elegant ambiance. Please enjoy the seasonal delicacies made from the finest ingredients in these two settings, along with sake from various regions of Japan.

### Recommended dishes

Prime Horse Shabu-Shabu 3,190 yen per person  
Sumptuous Horse Sashimi Platter from 3,520 yen  
Fried Mustard-Filled Lotus Root 770 yen

2F, 1-6-12, Shimotori, Chuo-ku, Kumamoto City  
TEL: 096-354-3488  
Hours: 17:00-24:30  
Capacity: 70  
(private rooms available)  
No parking  
Closed on Sunday



## 12 Local Cuisine Kenzo 馬肉郷土料理 けんぞう



F-4



Complimentary dish

Enjoy a wide range of dishes such as steak, tempura, and offal hotpot, besides horse meat sashimi.

### Recommended dishes

Horse meat sashimi, 2,420 yen  
5-cuts platter (liver, tongue, heart, aorta, and shoulder), 3,630 yen  
Horse meat nigiri sushi, 1,320 yen

Basement, Shichiko Building, 1-8-24, Shimo-tori, Chuo-ku, Kumamoto City  
TEL: 096-356-8775  
Hours: 17:00-22:30 (LO 22:00)  
Capacity: 28  
No parking  
irregular holidays



Benefits you will receive by presenting this booklet.



F-4

## 13 BATAN GYUTAN 馬タン牛タン

We look forward to serving you Kumamoto's famous foods, including horse tongue, a rarity even in Kumamoto, horse donburi, and Akaushi beef.

### Recommended dishes

Char-grilled horse and beef tongue, 4,389 yen  
The house special horse meat bowl, 1,419 yen

Lion Building Matsufuji kan, 1-11-17, Shimo-tori, Chuo-ku, Kumamoto City  
TEL: 080-3746-3779  
Hours: 11:00-16:00 (LO 15:30)  
17:00-24:00 (LO 23:00)  
[Sun & public holidays]  
11:00-23:00 (LO 22:00)  
Capacity: 50 (private rooms available)  
No parking irregular holidays



Complimentary horse tongue tempura

## 14 KUMAMOTO HORMONE (Innards) 熊本ホルモン



E-5

Kumamoto's leading horumon (offal) specialist. Horse meat sashimi is the highlight of the menu.

### Recommended dishes

Horse liver cubes, 2,200 yen  
Marucho (intestine), 950 yen  
Fatty horse meat sashimi, 2,500 yen

1F, Rosé Hanabatakekan, 3-11 Shinshigai, Chuo-ku, Kumamoto City  
TEL: 096-351-0330  
Hours: 11:30-14:00 18:00-23:00 (LO 22:30)  
Capacity: 35 No parking  
Closed on Sundays  
\*No under-age customers



Complimentary horse meat miso tofu (small)

## 15 Suganoya Shinshigai 菅乃屋 新市街店



E-5

We have a large selection of standard horse meat dishes such as grilled horse meat, shabu-shabu, and Nigiri that make the most of the quality of the ingredients.

### Recommended dishes

Horse liver sashimi 1,500 yen  
Horse Nigiri (5 kan) 2,450 yen  
5 kinds of Grilled Horse plate 2,000 yen

1F Comfort Hotel Kumamoto, 2-10, Shinshigai, Chuo-ku, Kumamoto City  
TEL 0120-150-834  
Hours: 17:00-22:00 (LO 21:00)  
Capacity: 54  
No parking  
Closed on Monday, 12/31, 1/1



## 16 Guruman Sannenzaka 馬刺・赤牛・天草大王 グルマン三年坂



G-3

Find the best of Kumamoto here. We are dedicated to serving horse sashimi and Akaushi beef, and sake. Popular for lunch are fatty horse donburi and Akaushi beef hamburger steak. We are open until 17:00 and have counter seating and private rooms.

### Recommended dishes

horse Liver Sashimi (while supply lasts) 2,000 yen  
Kumamoto Meat Lunch - Kumamoto Steak Combo Donburi 2,200 yen  
Kumamoto Meat Lunch - Fatty Horse Donburi 980 yen  
You can enjoy both horse sashimi and Akaushi beef for lunch. Credit card etc. correspondence.

1F, Sky Building, 5-6, Ansei-machi, Chuo-ku, Kumamoto City  
TEL: 096-321-6200  
Hours: [Lunch] 11:00-17:00  
[Dinner] 17:00-22:00  
Capacity: 40 (private rooms available)  
No parking  
Open all year round



Complimentary Hitomaji Guru-Guru - A Kumamoto specialty

\*Lunchtime is OK, too \*1 plate per group

※LO (Last Order)

Map of the locations are in back

Downtown Area Central City Kumamoto Station Area Suizenji Area Suburbs



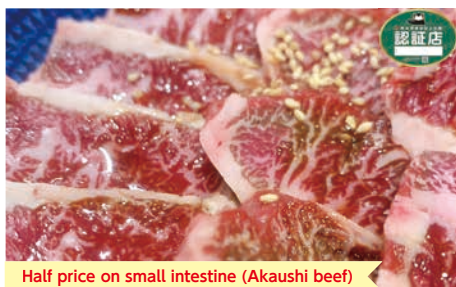


Establishments certified for infection control in Kumamoto Prefecture



G-4

## 17 Horumon man ホルモンマン



Half price on small intestine (Akaushi beef)

The restaurant offers fresh Akaushi beef offal and meat raised in Kumamoto at reasonable prices. We also offer a variety of horse dishes, including Kumamoto's famous horse sashimi, horse yukhoe, and grilled horse.

### Recommended dishes

Assorted Beef offal (3-cuts) Platter 1,298 yen  
Akaushi short ribs 1,078 yen  
Horse sashimi 1,518 yen



1F, Tenjinichibankan Building, 1-6-12, Shimotori, Chuo-ku, Kumamoto City  
TEL: 096-355-4129  
Hours: 17:00-25:00 (LO 24:00)  
Capacity: 38 No parking irregular holidays.



F-2

## 18 Ajidokoro OGAWA 味処 お川



Enjoy marbled horse sashimi, locally-sourced fish, and vegetables with sake and shochu at our restaurant. Our old establishment offers a view of Kumamoto Castle and the flavors of Kumamoto. We can accommodate single diners. We can accommodate single diners. \*No children, please.

### Recommended dishes

Marbled horse meat sashimi, 2,530 yen  
Boiled red Higo eggplant in dashi, 440 yen  
Horse Liver Sashimi (reservation required) Market price

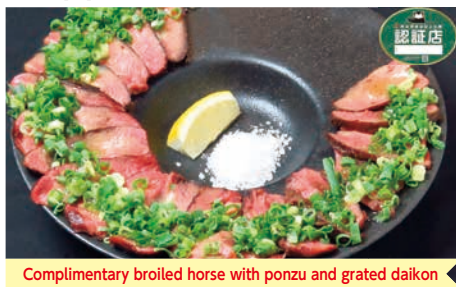


3F, Toraya Building, 4-10, Kamitori-cho, Chuo-ku, Kumamoto City  
TEL: 096-353-2393  
Hours: [Mon, Tue, Thu, Fri] 11:45-13:30  
18:00-22:00 (LO 21:30)  
Capacity: 25  
No parking  
Closed on Sundays and public holidays.



G-3

## 19 Ippin Sannenzaka 郷土・焼鳥 いっぴん三年坂



Complimentary broiled horse with ponzu and grated daikon

All seats are private rooms with sunken kotatsu. We also serve alcoholic beverages at lunchtime. Our specialty, the rare horse tongue, is worth a try! The seared red beef served as an appetizer attracts many repeaters. Our Amakusa Seafood Donburi is a popular lunch choice.

### Recommended dishes

Horse Liver Sashimi 1,600 yen-  
6 Kumamoto Herb Chicken Skewers 1,250 yen  
Sake Taster Set  
5 Kind of Oden 980 yen



1F, Taishin No.6 Building, 5-13, Ansei-machi, Chuo-ku, Kumamoto City  
TEL 096-353-0512  
Hours: 17:00-23:00  
Capacity: 90 (private rooms available)  
No parking irregular holidays.



F-3

## 20 Local Cuisine Hayakawa 郷土料理 はや川



Complimentary small dish of the day

For 50 years, we have cherished our relationships with our customers. We recommend our kaiseki cuisine, meticulously prepared with fresh seasonal seafood and ingredients sourced in Kumamoto. Various horse meat dishes are also popular. Please enjoy the taste of our homeland in a private room with a sunken kotatsu.

### Recommended dishes

Prix-fixe Meal of Regional Cuisine, 5,500 yen  
Kaiseki Meal, 4,400 yen  
Eggplant marinated in mustard, 440 yen



5-18, Ansei-machi, Chuo-ku, Kumamoto City  
TEL: 096-352-1967  
Hours: 17:30-23:00  
Capacity: 50 (private rooms available)  
No parking irregular holidays



## 21 AOYAGI 青柳

Enjoy food made with locally-sourced ingredients, including a wide range of horse meat dishes, and seafood from the Sea of Ariake.

### Recommended dishes

Premium horse meat sashimi, 3,300 yen  
Aso Akaushi Beef steak, 5,000 yen  
Braised wild sea bream head, 1,200 yen



1-2-10, Shimo-tori, Chuo-ku, Kumamoto City  
TEL: 096-353-0311  
Hours: 11:30-14:00  
17:00-22:00 (LO 21:00)  
Capacity: 140 (private rooms available)  
No parking irregular holidays



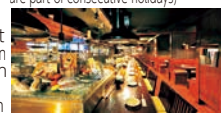
E-3

## 22 Higo no Jinya 郷土・海鮮 肥後の陣屋

We offer cuisine prepared in the Kumamoto style using local sea and mountain ingredients. Our dishes include local delicacies such as horse sashimi, Kumamoto Akaushi beef steak, and fresh seafood from Amakusa.

### Recommended dishes

Direct from Amakusa Assortment of 5 varieties of prime sashimi, 1,500 yen  
Choice Horse Sashimi 1,700 yen  
The original Kumamoto Castle Kawara Soba (serves 2), 2,600 yen



1-5-20, Shimo-tori, Chuo-ku, Kumamoto City  
TEL: 096-211-1414  
Hours: [Mon-Sat] 17:00-23:00 (LO 22:00)  
Last order for drinks, 22:30  
Capacity: 160 (private rooms available)  
Can eat up to 70 for a party. No parking  
Closed on Sundays, 1/1, 1/2, 1/3  
(Closed on Monday if Sunday and Monday are part of consecutive holidays)



E-4

## 23 Yamami Chaya 阿蘇庭 山見茶屋

Asotei Yamami Chaya serves dishes made with various ingredients from the wilds of Aso, such as mustard green, vegetables, and wild vegetables. Enjoy regional cuisine such as Kumamoto's famous horse sashimi and Akaushi Beef.

### Recommended dishes

Sakura-zen (a meal including horse meat cooked on lava stone), 2,250 yen  
Akaushi Beef bowl, 1,700 yen  
Dagojiru (soup), 600 yen



1-1-2, Ninomaru, Chuo-ku, Kumamoto City (inside Sakuranobaba Johsaien)  
TEL: 096-327-9293  
Hours: 11:00-18:00  
Subject to change due to COVID-19 restrictions.  
Capacity: 48 (private rooms available)  
Facility parking lot  
Closed on the last day of the year.



A-3

## 24 Gorohachi 五郎八本店

The old-establishment serves regional dishes that represent Kumamoto, and original creations. It is popular among local gourmands.

### Recommended dishes

Prime marbled horse meat sashimi, 2,750 yen.  
Omelette with mentaiko, 880 yen  
Akaushi Beef steak, 2,750 yen.



D-4



Complimentary glass of fruit wine

※LO (Last Order)

Map of the locations are in back

Downtown Area Central City Kumamoto Station Area Suizenji Area Suburbs









Establishments certified for infection control in Kumamoto Prefecture



Benefits you will receive by presenting this booklet.



### 33 AMAKEN 馬刺しと焼き鳥 熊本郷土グルメの店 アマケン

馬刺し 焼き鳥 熊本郷土グルメの店 アマケン E-4



We source fresh fish from Amakusa with our trucks and serve it to customers. You can enjoy fish, yakitori, local delicacies, and a variety of other dishes.

#### Recommended dishes

Amakusa Gokyo Platter 1,296 yen  
Horse Sashimi Platter 2,786 yen  
10 Skewers 1,382 yen



1-9-26, Shimo-tori, Chuo-ku, Kumamoto City  
TEL: 096-355-2238  
Hours: 18:00-1:00  
Capacity: 50  
No parking  
irregular holidays

### 34 Okonomiyaki Teppanyaki Daichan お好み焼き・鉄板焼 大ちゃん D-4



We primarily serve teppanyaki using horse meat, Japanese beef (from Kumamoto), and seafood sourced in the prefecture, and we also take great care in making okonomiyaki.

#### Recommended dishes

Marbled Horse Sashimi 2,200 yen  
Horse liver sashimi, 2,200 yen  
Curry Cheese, 1,480 yen



2F, Mizuta Building, 11-20, Hanabata-cho, Chuo-ku, Kumamoto City  
TEL: 096-356-2905  
Hours: [Mon-Sat] 17:00-23:00  
Capacity: 50 (private rooms available)  
No parking  
Closed on Sundays, Public holidays

### 35 NABEYA TAMARI 鍋や TAMARI 熊本総本家 D-4



Premium horse meat sashimi for 980 yen!

The hotpot specialist is much loved in Kumamoto. The extensive menu includes hotpot of premium offal, shio chanko, and jjigae.

#### Recommended dishes

An 8-course meal with a choice of hotpot + 110 min of unlimited drinks, 4,400 yen  
A hotpot of choice + All-you-can-eat 25 courses + 110 min unlimited drinks, 4,378 yen  
(Fri, Sat, day before holiday +550 yen)  
Horse liver sashimi, 1,650 yen



3F, Mizuta Building, 11-20, Hanabata-cho, Chuo-ku, Kumamoto City  
TEL: 096-352-5011  
Hours: 17:30-24:00  
Capacity: 110 (private rooms available)  
No parking  
irregular holidays

### 36 Yappa High Rich やっぱはいりっち E-5



Our handmade whole buckwheat noodles are boiled for ten seconds. We serve 120 kinds of local sake, rice shochu, premium barley shochu, potato shochu, and more in a Japanese-style setting with jazz playing in the background. Omakase (chef's choice) dishes and all-you-can-drink menus are also available, and of course, soba noodles are included. Private rooms are available.

#### Recommended dishes

Morisoba, 800 yen  
Horse rib meat sashimi, 1,000 yen  
Soba miso, 500 yen



2F, Komeno Kaikan, 13-13 Sakae-dori, Hanabata-cho, Chuo-ku, Kumamoto City  
TEL: 096-355-2121  
Hours: 18:00-24:00  
Capacity: 35 (private rooms available)  
No parking  
Closed on Sundays  
\*Open on Sundays during 3-day weekends.

### 37 Parlour Hibari パーラーヒバリ D-5

We offer a relaxing ambiance where you can enjoy lunch, daytime drinking, and standing while drinking.

#### Recommended dishes

Mackerel and Tofu 540 yen  
Kuroge Wagyu Tendon  
Stewed with Daikon 540 yen  
Tonkotsu Sui Mai 230 yen per piece

1F, Shinshigai Banner Building, 1-12, Shinshigai, Chuo-ku, Kumamoto City  
TEL: 096-322-1212  
Hour: 11:30-24:00 (LO 23:00)  
Capacity: 40  
No parking  
open all year round



### 38 SAKASOU 酒湊 D-5

Fresh seafood is sourced from Amakusa in the restaurant's own truck. Enjoy meat and regional dishes, too.

#### Recommended dishes

Amakusa Gokyo Plate 980 yen per person  
Horse Sashimi Platter 3,800 yen  
Crab Meat Gratin cooked in the shell, 680 yen.



### 39 Tachi sushi 立ち寿し E-5

Serving fresh fruits of the sea at reasonable prices. The menu comes in four languages.

#### Recommended dishes

Seafood bowl, 900 yen  
Sushi set (steamed egg custard) 750 yen  
Tuna feast, 2,500 yen



### 40 GEN ZO-NE 居酒屋 源 ZO-NE A-5

We are a short walk from the Gofukumachi tram stop, two stops from Kumamoto Station. The lanterns reflect the character of the izakaya, a hideaway in a traditional townhouse. Even if you come alone, you can enjoy the lively conviviality of the place. Our new specialty is Kumamoto oil fondue (Akaushi beef, horse, mustard-filled lotus root, vegetables, etc., fried in olive oil).

#### Recommended dishes

Oil fondue of Akaushi beef, horse meat, and karashi renkon (lotus root stuffed with mustard), 3,300 yen \*Booking is essential  
Churrasco (Akaushi beef, pork, chicken Pão de queijo linguica, etc.), 4,400 yen  
Braised horse tendons, 600 yen



Complimentary candle

※LO (Last Order)

Map of the locations are in back

Downtown Area Central City Kumamoto Station Area Suizenji Area Suburbs



## 41 Birdman KUMAMOTO-station



Complimentary glass of drink

We serve succulent yakitori and vegetable-wrapped skewers packed with the umami of seasonal veg. We also have a wide selection of sake!

### Recommended dishes

Lettuce Wrap 528yen  
Kuro Karaage 748 yen  
Horse Sashimi 1,838 yen

1F, 3-26-47, Kasuga, Nishi-ku, Kumamoto City  
TEL: 096-354-7787  
Hours: 16:00-24:00  
Capacity: 42  
Parking available (affiliated parking lot) open all year round



## 42 ENISHI 創作和食 縁



Complimentary glass of drink

The Japanese restaurant serves dishes that hint at the season, with a lot of care given to preparing ingredients by hand.

### Recommended dishes

Irodori Lunch 2,500 yen  
Komachi Lunch 3,850 yen  
Dinner 4,950 yen

2F, Chonji Easton Building, 5-40, Kamitori-cho, Chuo-ku, Kumamoto City  
TEL: 096-351-0824  
Hours: 11:30-15:00(LO 14:00), 17:30-22:30(LO 21:00)  
Reservation only at night  
Capacity: 51 (private rooms available)  
No parking Closed on Mondays



## 43 Mizue 和食 瑞恵



We always serve local seasonal fish, vegetables, and meat dishes, focusing on Kumamoto ingredients, and we also offer a variety of horse meat dishes, including our popular horse croquettes and horse meat cooked in rice. Please enjoy the taste and hospitality of our long-established restaurant with a glass of locally brewed sake.

### Recommended dishes

Multi-course meal at the counter (6 courses, updated daily) 2,178 yen  
Higo Platter (horse sashimi, mustard-filled lotus root, Hitomaji Guru-Guru) 2,200 yen  
Horse croquette 450 yen \*The counter is only available in the main restaurant

1F, Kawasaki Building, 2-26, Ansei-machi, Chuo-ku, Kumamoto City  
TEL: 096-322-6973  
Hours: 17:00-24:00  
Capacity: 70 (private rooms available)  
No parking irregular holidays.



## 44 Ajinohatoba 味の波止場



Please enjoy a wide variety of local delicacies, including freshly caught spear squid and tiger pufferfish dishes.

### Recommended dishes

Tiger Pufferfish Multi-Course Meal 4,950 yen  
Regional Cuisine Multi-Course Meal 4,400 yen  
Grilled Mackerel Sushi 1,320 yen

1F Riki Building No.1, 1-5-26, Shimotori, Chuo-ku, Kumamoto City  
TEL: 096-322-9530  
Hours: 17:00-23:00(LO 22:00)  
Capacity: 90 (private rooms available)  
No parking irregular holidays.



Establishments certified for infection control in Kumamoto Prefecture



Regional Cuisine



Benefits you will receive by presenting this booklet.

Wheelchair accessible  
Smoking seats available



## 45 syunsai dokoro matsukawa 旬彩処 まつ川

All the seats are horigotatsu-style (tables laid over a sunken floor). Enjoy regional dishes, kaiseki cuisine, a la carte, and seasonal ingredients.

### Recommended dishes

Choice marbled horse meat sashimi 2,728 yen  
Grilled Amakusa Daio chicken seasoned with salt, 1,078 yen  
Prix-fixe Kumamoto Meal, 5,500yen

BF, 1-7-7, Shimo-tori Chuo-ku, Kumamoto City  
TEL: 096-352-8366  
Hours: 17:30-23:00 (LO 22:30)  
Capacity: 34 (private rooms available)  
No parking  
Closed on Sundays (Closed on Monday if Sunday and Monday are part of consecutive holidays)



Complimentary glass of Kuma shochu

## 46 Amakusa Hyoroku 郷土料理・活魚料理・寿司・おでん 天草瓢六

In addition to sushi and sashimi of freshly sourced seafood from Amakusa, local specialties such as horse sashimi, mustard-filled lotus root, and Hitomaji Guru-Guru, we serve dishes prepared with in-season ingredients.

### Recommended dishes

Premium Assortment of Sashimi, 2,750 yen  
Premium Nigiri Sushi, 2,970 yen  
Teriyaki of Conger Eel, 1,870 yen

1F, HANABATA PLANET BLD, 10-18, Hanabata-cho, Chuo-ku, Kumamoto City  
TEL: 096-325-6444  
Hours: [Mon-Thurs] 17:30-24:00 [Fri-Sat] 17:30-1:00  
Capacity: 52 No parking  
Closed on Sundays (Closed on Monday if Sunday and Monday are part of consecutive holidays)



## 47 Amakusa kaimaru 天草海まる

Located in Sakura-no-Baba Johsaien Garden, close to Kumamoto Castle, our restaurant's sea urchin croquettes and the bukkake kaisen zuke-don (seafood bowl) with spicy yuzu sauce made in-house are also popular among tourists.

### Recommended dishes

Bukkake Kaisen Zuke Donburi 1,650 yen  
Set Meal with Sea Urchin Croquettes 1,980 yen  
Premium Sea Urchin Croquette 400 yen  
\*Possibility of price change

1-1-2, Ninomaru, Chuo-ku, Kumamoto City  
(inside Sakuranobaba Johsaien)  
TEL: 096-319-5073  
Hours: 11:00-18:00  
Subject to shorter business hours  
Capacity: 33 Parking available  
Closed on 12/31



## 48 Nakamura 和食 仲むら

Savor seasonal Japanese cuisine while gazing at the Japanese garden. Please spend a relaxing evening in Kumamoto, enjoying local cuisine and choice wines.

### Recommended dishes

Nakamura Exclusive Kaiseki Meal, 11,000 yen  
Regional Cuisine Kaiseki Meal from 6,600 yen  
Conger Eel Bowl, 1,900 yen

50, Renpei-cho, Chuo-ku, Kumamoto City  
TEL: 096-351-0535  
Hours: 11:30-15:00 (LO 14:30) 17:00-23:00 (LO 21:30)  
[Sun & public holidays] Open until 21:30 (LO 20:30)  
Capacity: 140 Parking for 4 cars.  
Closed on Wed, the end of the year, New Year's day



※LO (Last Order)

Map of the locations are in back

Downtown Area Central City Kumamoto Station Area Suizenji Area Suburbs



## 49 Unagiya Masakazu 鰻や正一 (まさかず)



We are pleased to announce that Tsuboitei reopened after refurbishment as Unagiya Masakazu on May 25. We serve dishes prepared with the choicest ingredients and Japanese eel. We look forward to your continued patronage.

### Recommended dishes

Masakazu Gozen 4,900 yen  
Unagimeshi 4,200 yen  
Una-Ju 3,200 yen

4-20-39, Tsuboi, Chuo-ku, Kumamoto City  
TEL: 096-346-2224  
Hours: Lunch 11:00 - 15:00 (LO 14:00)  
Dinner 17:00 - 21:00 (LO 20:00)  
Seats 30 (private rooms available)  
Parking for 3 vehicles  
(Extra 8 spaces are available at Tokuchi Honten)  
irregular holidays



## 50 Japanese Restaurant Haraguchi 日本料理 はらぐち



A complimentary glass of house-made beverage

Enjoy high-quality Japanese cuisine in a restaurant adorned with classical folding screens, hanging scrolls, floral arrangements, and decorative antiques.

### Recommended dishes

Multi-Course Meal Yuri 7,260 yen  
Multi-Course Meal Botan 9,680 yen  
Premium Multi-Course Meal Shakuyaku 12,100 yen

2-16-3, Suizenji, Chuo-ku, Kumamoto City  
TEL: 096-383-1931  
Hours: 11:30-22:00 By reservation only.  
Capacity: 30 (private rooms available)  
Can seat up to 30 by request.  
Parking for 14 cars.  
Open all year round (call to confirm)



## 51 Japanese Restaurant Kaminomizu 料理方秘 神の水



Complimentary shot of rice shochu.

Enjoy seasonal dishes prepared with an abundance of locally-sourced ingredients.

### Recommended dishes

Lunch, 1,650 yen-  
Choice marbled horse meat sashimi, 3,080 yen  
Japanese-style roast beef, 2,200 yen

3-4, Suizenji Koen, Chuo-ku, Kumamoto City  
TEL: 096-237-7507  
Hours: 11:30-14:00 (LO)  
18:00-22:00 (LO 21:30)  
Capacity: 30 (private rooms available)  
No parking  
irregular holidays



## 52 Takikawa りょうり亭 多喜加和



Complimentary glass of soft drink with a presentation of this booklet.

Enjoy seasonal dishes packed with nature's bounty.

### Recommended dishes

Yorokobi Kaiseki Meal, 3,850 yen  
Yawaragi Kaiseki Meal, 5,500 yen  
Hinokuni Kaiseki Meal (regional cuisine), 6,600 yen

13-4, Suizenji Koen, Chuo-ku, Kumamoto City  
TEL: 096-387-0300  
Hours: 11:30-14:00 (LO)  
17:00-21:00 (LO)  
Lunch and dinner by reservation only.  
Capacity: 80 (private rooms available)  
Parking for 15 cars  
irregular holidays



※LO (Last Order)

Regional Cuisine Kumamoto Japan Tappin Horse Meat Wagyu Beef Bunsai Udon Ramen Gyoza

## 53 GRILL de GYAN

The Yoshoku (Western-style food) restaurant is housed in a renovated house about 100 years old. Customers can enjoy horse meat sashimi and hamburger steak.

### Recommended dishes

GYAN's signature dish garlicky grilled tuna, 1,400 yen  
Chicken in Guernsey sauce & garlic toast, 1,480 yen  
Horse meat hamburger steak, 1,200 yen

5-21, Tsuboi-machi, Chuo-ku, Kumamoto City  
TEL: 096-352-8821  
Hours: 11:30-14:00  
17:30-23:00 (LO 22:00)  
Capacity: 100 No parking  
irregular holidays



## 54 tutti

The Italian restaurant is committed to using local ingredients such as organic vegetables from contract farms, Amakusa Daio chicken, and red beef.

### Recommended dishes

Mr. I's roast red beef, 1,980-2,750 yen /100g  
Roast Amakusa Daio chicken, 858-968 yen /100g  
Bagna Cauda, 1,518 yen

3F, Central Building, 2-29, Ansei-machi, Chuo-ku, Kumamoto City  
TEL: 096-323-6068  
Hours: 18:00-24:00 (LO 23:00)  
Capacity: 61 (semi-private rooms)  
No parking  
Closed on Mondays



## 55 Steak KAMON 鉄板焼 ステーキ 佳紋

The live abalone from Amakusa prepared in a special sauce is exceptional, not to mention the choice steak.

### Recommended dishes

Fillet steak lunch 2,800 yen  
Steak & Pilaf 2,690 yen  
Abalone & Steak course 9,350 yen

Basement, Stella Kamitori Building, 3-15, Kamitori-cho, Chuo-ku, Kumamoto City  
TEL: 096-351-4129  
Hours: 11:30-15:00 (LO 14:00)  
17:30-23:00 (LO 21:00)  
Capacity: 48 (private rooms available)  
(private rooms available)  
No parking irregular holidays



## 56 Dining Café Sai ダイニングカフェ 彩

Enjoy original creations that highlight local ingredients in a perfect spot with a panorama of Kumamoto Castle.

### Recommended dishes

Lunch of the day, 1,150 yen  
East-meets-West Meal, from 3,500 yen -

14F, Kumamoto City Hall, Tetori Honmachi, Chuo-ku, Kumamoto City  
TEL: 096-328-2954  
Hours: 11:00-15:00  
17:30-22:00\*Reservation required  
Capacity: 100 (private rooms available)  
No parking Closed on Sundays



Benefits you will receive by presenting this booklet.

Wheelchair accessible Smoking seats available





Establishments certified for infection control in Kumamoto Prefecture



D-4

## 57 PRIMADONNA



No charge(except course menu).  
Free 30 min unlimited drinks extension.

Established in 1997. The restaurant is frequented by locals and those in the restaurant trade working the late shift.

### Recommended dishes

Yukhoe of Kumamoto horse meat, 1,310 yen  
Higo Akaushi Beef sirloin steak (200g), 3,680 yen  
Oaso chicken stewed in lemony cream sauce, 1,560 yen.

1F, Shanse Shinagawa, 11-18, Hanabata-cho, Chuo-ku, Kumamoto City  
TEL: 096-324-2989  
Hours: 17:00-3:00(LO 2:30) [Sun & public holidays] 17:00-24:00(LO 23:30)  
Capacity: 75 (private rooms available)  
No parking Closed on Mondays



## 58 GRILL Suematsu グリル末松



We serve teppan-grilled Kumamoto vegetables. We look forward to serving you delicious Kumamoto meat and carefully selected wines.

### Recommended dishes

Kumamoto Otsuka Beef T-Bone Steak (18 yen per gram) 12,660 yen per 700g  
Homemade sausage 750 yen  
Kumamoto Vegetable Grill 1,030 yen

1F, Business Hotel Shuttle, 4-1, Chuogai, Chuo-ku, Kumamoto City  
TEL: 096-312-2929  
Hours: Lunch 11:30-15:00 Dinner 17:00-23:00  
Capacity: 30 No parking irregular holidays



## 59 German Haus ゲルマンハウス



Enjoy luxury in a casual way. Savor dishes carefully made with special ingredients in an elegant German ambiance.

### Recommended dishes

Multi-Course Meal Berlin (lunch) 2,200 yen  
Multi-Course Meal German (dinner) 2,750 yen  
Kuroge Wagyu Fillet Steak Course 7,480 yen

6-38-16, Suizenji, Chuo-ku, Kumamoto City  
TEL: 096-382-2555  
Hours: Lunch 11:00 - 15:00 Dinner 17:00 - 21:00  
Seats 26 (private rooms available)  
Parking available  
Closed on Wednesdays and 2nd and 4th Thursdays



Suizenji



## 60 Whiskey CAT ウイスキーキャット



The orthodox bar serves Irish stout and draft Guinness. Barreled whiskey, single malt Scotch whiskey, cocktails and mojitos are also popular.

### Recommended dishes

Guinness (one pint), 1,200 yen  
Fruit and champagne cocktail, 1,800 yen  
Mojito, 1,500 yen

10-19, Hanabata-cho, Chuo-ku, Kumamoto City  
TEL: 096-356-2818  
Hours: 19:00-2:00 [Fri & Sat] Open until 3:00  
Capacity: 11 No parking Closed on irregular holidays



※LO (Last Order)

Regional Cuisine

## 61 White Roman ホワイトロマン

Fabulous staff await at the elegant and calm bar. Go ahead and open the door.

### Recommended dishes

120 min of unlimited drinks, 4,400 yen  
(Includes whiskey, Highball, brandy, shochu, and karaoke)

6F, Jasmac Building, 13-3, Hanabata-cho, Chuo-ku, Kumamoto City  
TEL: 096-353-1500  
Hours: 20:00-1:00  
Capacity: 25 No parking  
Closed on Sundays and public holidays



## 62 Hostess bar Sansui スナックさんすい

Cheerful female staff are waiting to serve customers in the bar with a chilled ambiance. Single customers are welcome!!

### Recommended dishes

90 min of unlimited drinks, 4,000 yen.  
3,500 yen per customer if there are more than two.

5F, TM-13 Building, 3-4, Shinshigai, Chuo-ku, Kumamoto City  
TEL: [12:00-17:00] 096-325-5235 [17:00-25:00] 096-325-2268  
Hours: 20:00-1:00  
Capacity: 100 (private rooms)  
No parking open all year round



## 63 Misty ミスティー

Have an enjoyable time with members of staff that have beautiful smiles in the chic and relaxing setting.

### Recommended dishes

Unlimited drinks (120 min), 4,400 yen

3F, Dai 3 RIKI Building, 13-49, Hanabata-machi, Chuo-ku, Kumamoto City  
TEL: 096-351-2177  
Hours: 20:00-1:00  
Capacity: 30 No parking  
Closed on Sundays and public holidays



## 64 FOOD & SWEETS CAFÉ FREEDOM SMILE

We serve trendy Korean food and desserts, as well as our signature fried chicken and a wide variety of beverages. We hope you enjoy the restaurant's stylish neutral decor consisting of mortar, wood, white tones, and furnishings, where music and video play in the background.

### Recommended dishes

Cheese Dog made with milk, rice flour, and eggs sourced in Kumamoto, 450 yen  
Uma-Shio Kara'age (plain, yangnyeom, chilli mayo, or chopped scallions) 500 yen  
Smoothie made with milk sourced in the Prefecture, 450 yen

1-3-48, Tasaki, Nishi-ku, Kumamoto City  
TEL: 096-200-5786  
Hours: 11:00-19:00 (LO 18:50)  
Capacity: 15  
Parking available  
Closed on Sundays and Mondays



Benefits you will receive by presenting this booklet.



Map of the locations are in back

Downtown Area

Central City

Kumamoto Station Area

Suizenji Area Suburbs



Eat Kumamoto's local foods!  
And drink as well!  
It's a landmark of foods and amusement.



A new landmark of foods and amusement OPENS! It includes many restaurants representing Kumamoto's local foods and multipurpose space "SDGs square".



In the middle of Kumamoto Food Stall Village, you can find a small street called, "Kaminoyoko-street", that is a Japanese traditional Yokochō-style (many small restaurants in the side of street). Every restaurant has counter seats, so you can feel Japanese retro atmosphere easily.



Please feel free to stop by at vending machine for 27 shochu breweries and try them!



2-22, Jyoto-machi, Chuo-ku, Kumamoto City  
Hours/12:00-23:30  
Closed/1st, 3rd and 5th Wednesday

## Lunch time available

Number	Store Name	TEL	Lunch Time	Page
1	Kumamoto Ramen <b>KOMURASAKI</b>	096-325-8972	11:00-16:00 (LO15:30) Closed/ New Year's holiday	4P
2	Kumamoto Ramen <b>RAMEN AKAGUMI</b>	096-325-8766	11:00-23:30 (LO23:00) Closed/ Open all year round	4P
3	Kumamoto Ramen <b>Kumamoto Tonkotsu DEN</b>	096-354-9822	[Monday to Saturday] 11:30-3:00 (LO2:30) [Sunday / Holiday] 11:30-1:00 (LO0:30) Closed/ New Year's Day	4P
4	Kumamoto Ramen <b>Koku Ryu Kou</b>	096-353-0929	11:00-14:00 (LO13:30) Closed/ Sunday	4P
5	Kumamoto Ramen <b>Kumamoto Ramen Kokutei</b>	096-352-1648	10:30-21:00 (LO20:30) Closed/ Please refer to Home page	5P
6	Kumamoto Ramen <b>OCEAN'S SEVEN</b>	090-8221-6659	[Weekdays] 11:00-16:00 (LO15:45) [Sat. Sun & Holidays] 11:00-16:30 (LO16:15) Closed/ Closed when the zoo is closed.	5P
7	Taipeen <b>Kourantei</b>	096-352-7177 Reservation phone	11:00-17:00 Closed/ Open all year round	5P
8	Taipeen <b>Chinese cuisine Enen</b>	096-353-3913	11:30-14:30 (LO14:00) Closed/ Saturday, Sunday and public holidays, irregular holidays	5P
9	Taipeen <b>Kairakuen</b>	096-352-2844	11:30-15:00 (Closes when all supplies have been used up.) Closed/ Monday, 2nd, 4th and 5th Tuesday	6P
10	Taipeen <b>Chinese Restaurant Marumi</b>	096-272-4949	11:30-15:00 Closed/ Monday (closed on Tuesday if Monday is a public holiday)	6P

※LO (Last Order)

## Lunch time available

Number	Store Name	TEL	Lunch Time	Page
13	Horse Meat <b>BATAN GYUTAN</b>	080-3746-3779	11:00-16:00 (LO15:30) Closed/ Irregular holidays	7P
14	Horse Meat <b>KUMAMOTO HORMONE (Innards)</b>	096-351-0330	11:30-14:00 Closed/ Sunday *No under-age customers.	7P
16	Aka Ushi Beef <b>Guruman Sannenzaka</b>	096-321-6200	11:00-17:00 Closed/ Open all year round	7P
18	Local food <b>Ajidokoro OGAWA</b>	096-353-2393	11:45-13:30 Closed/ Sunday, public holidays	8P
21	Local food <b>AOYAGI</b>	096-353-0311	11:30-14:00 Closed/ Irregular holidays	9P
23	Local food <b>Yamami Chaya</b>	096-327-9293	11:00-18:00 Closed/ End of year	9P
27	Izakaya Japanese-style bar <b>Ichinosoko</b>	096-325-3911	11:30~15:00 (LO14:00) Closed/ Open all year round	10P
29	Izakaya Japanese-style bar <b>Koufukuya KASHO</b>	096-351-9400	11:30~15:00 (LO14:00) Closed/ Tuesday	11P
37	Izakaya Japanese-style bar <b>Parlour Hibari</b>	096-322-1212	11:30-24:00 (LO 23:00) Closed/ Open all year round	13P
39	Izakaya Japanese-style bar <b>Tachi sushi</b>	096-354-9999	11:30-14:00 Closed/ Irregular holidays	13P
42	Japanese food <b>ENISHI</b>	096-351-0824	11:30-15:00 (LO14:00) Closed/ Monday	14P
47	Japanese food <b>Amakusa kaimaru</b>	096-319-5073	11:00-18:00 Closed/ 12/31	15P
48	Japanese food <b>Nakamura</b>	096-351-0535	11:30-15:00 (LO14:30) Closed/ Closed on Wed, the end of the year, New Year's holiday	15P
49	Japanese food <b>Unagiya Masakazu</b>	096-346-2224	11:00-15:00 (LO14:00) Closed/ Wednesday	16P
50	Japanese food <b>Japanese Restaurant Haraguchi</b>	096-383-1931	11:30-22:00 *Reservation required Closed/ Open all year round (call to confirm)	16P
51	Japanese food <b>Japanese Restaurant Kaminomizu</b>	096-237-7507	11:30-14:00 (LO) Closed/ Irregular holidays	16P
52	Japanese food <b>Takikawa</b>	096-387-0300	11:30-14:00 (LO) *Reservation required Closed/ Irregular holidays	16P
53	Western food <b>GRILL de GYAN</b>	096-352-8821	11:30-14:00 Closed/ Irregular holidays	17P
55	Western food <b>Steak KAMON</b>	096-351-4129	11:30-15:00 (LO14:00) Closed/ Irregular holidays	17P
56	Western food <b>Dining Café Sai</b>	096-328-2954	11:00-15:00 Closed/ Sunday	17P
58	Western food <b>GRILL Suematsu</b>	096-312-2929	11:30-15:00 Closed/ Irregular holidays	18P
59	Western food <b>German Haus</b>	096-382-2555	11:00-15:00 Closed/ Wednesday, 2nd and 4th Thursday	18P
64	Sweets <b>FOOD &amp; SWEETS CAFÉ FREEDOM SMILE</b>	096-200-5786	11:00-19:00 (LO18:50) Closed/ Sunday, Monday	19P

## for Vegetarian

Number	Store Name
21	AOYAGI *Advance notice is required
25	Syaraku *Set meals only (must be reserved three days in advance)
30	FUKUYAMA
44	Ajinhohatoba
47	Amakusa kaimaru
50	Japanese Restaurant Haraguchi *Reservation required
51	Japanese Restaurant Kaminomizu *Reservation required
54	tutti
56	Dining Café Sai

## for Muslim

Number	Store Name
21	AOYAGI *Advance notice is required
22	Higo no Jinya *Seat meals only (from two diners, must be reserved three days in advance)
25	Syaraku *Set meals only (must be reserved three days in advance)
31	Uogashi Banya *Seat meals only (from two diners, must be reserved three days in advance)

You can view the tourist brochure, city map, food guidebook, etc., on the Association's website. You can also download pamphlets and request brochures.



Kumamoto icb pamphlet

Search



Map of the locations are in back

Downtown Area

Central City

Kumamoto Station Area

Suizenji Area Suburbs



## 1 Ikinariya Watanabe A-3

いきなりやわたなべ



But by date they keep for two months when frozen. Please consume immediately when purchased at room temperature.

The shop uses carefully selected sweet potatoes grown in Kumamoto Prefecture in the foothills of Mt. Aso. It specializes in Kumamoto's famous ikinari dango (dumplings), handmade the old-fashioned way. The shop has long been patronized by local and national customers and is popular with the media and entertainment industry.

Inside Johsaien Sakura no Koji, 1-1-2, Ninomaru, Chuo-ku, Kumamoto City  
TEL: 096-346-0247  
Hours: 9:00-18:00  
Paid parking available at Johsaien.  
Closed at the end of the year.



### Recommended

Kumamotojo Set  
(an assortment of 8), 1,500 yen

## 2 Kumamoto Castle Kobai-an A-3

熊本城香梅庵



Located in Sakura-no-Baba Johsaien at the foot of Kumamoto Castle, the store offers a variety of Japanese and Western confections that bring Kumamoto's history and culture to life, including Kumamoto's famous Homare no Jindaiko and Musha Gaeshi. Please stop by when you visit Kumamoto Castle.

Inside Johsaien Sakura no Koji, 1-1-2, Ninomaru, Chuo-ku, Kumamoto City  
TEL: 096-288-0039  
Hours: 9:00-18:00  
Paid parking available at Johsaien.  
open all year round



### Recommended

Happy Jindaiko Kumamon, 1,394 yen  
Musha Gaeshi, 10pc., 1,836 yen  
Soft Serve Jindaiko Ice Cream Take-out yen, eat-in 440 yen

## 3 Shunsaikan Sakura LIQUOR / Kuma BAR B-5

旬彩館さくら LIQUOR / くま BAR



The liquor store offers a wide selection of Kumamoto's liquors and brews, including Kuma Shochu and locally produced sake, and Kuma BAR adjoining the store serves them by the glass.

Sakura Machi Kumamoto, B1, 3-10, Sakuramachi, Chuo-ku, Kumamoto City  
Tel: 096-300-8111  
Hours: 10:00 - 21:00

Parking: on-site parking and paid parking available  
open all year round

### Recommended

Kamo no Mai 25°, 550 yen  
Sake tasting 660yen  
Kuma Shochu tasting, 550 yen



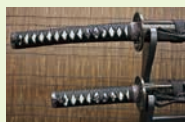
## 4 Downtown Art Company Asakusaya D-5

ダウントウンアートカンパニー 浅草屋



The shop sells supplies for festivals. It also sells a wide range of Japanese sundries and souvenirs made in Japan. A short walk from the Shimotori Shopping Arcade!!

1F E, Shower Valley Building, 2-7-32, Shimo-tori Street, Chuo-ku, Kumamoto City  
TEL 096-354-1944  
Hours: 10:00-19:00  
No parking  
Closed on Tuesdays



### Recommended

Kanji Kumamoto T-shirt (white), 1,100 yen  
Kumamon Kumamoto hanging scroll, 900 yen  
Original wooden tag (small), 1,080 yen

## 5 Mori Karashirenkon A-4

森からし蓮根 有限会社



The shop is the original maker of Kumamoto's famous karashi renkon. The crispy texture and the sinus-clearing heat are superb. Enjoy the authentic and original karashi renkon.

2-12-32, Shin-machi, Chuo-ku, Kumamoto City  
TEL: 096-351-0001  
Hours: 8:00-17:00  
Parking available  
irregular holidays

### Recommended

Karashi renkon (medium) 1,080 yen  
Karashi renkon chips  
(a box of 5 packets) 1,080 yen



## 6 Higo-Zogan Mitsusuke A-3

肥後象嵌 光助



Higo-Zogan is Kumamoto's traditional craft with a history spanning over 400 years, as is the construction of Kumamoto Castle. Zogan was originally used for tsuba and is now widely used for accessories and stationery. The shop is also popular for its hands-on Zogan crafting experience.

3-2-1, Shin-machi, Chuo-ku, Kumamoto City  
TEL: 096-324-4488  
Hours: 9:00-17:00  
(Sat & Sun & public holidays) 10:00-16:00

Parking available  
Closed at the end of the year  
and New Year holidays.

### Recommended

Kumamon's badge with strap, 7,700 yen  
Pendant, 4,400 yen  
Earrings, 11,000 yen



## 7 Kawakami Saketen F-2

川上酒店



The shop carries Kuma shochu from 27 distilleries. Some are available for free tasting. It also sells a variety of saké and wines produced in Kumamoto.

2-3, Yorozu-machi, Chuo-ku, Kumamoto City  
TEL: 096-326-1568  
Hours: 9:00-19:00  
Parking available  
irregular holidays

### Recommended

Kikuka Chardonnay Seseragi 2,409 yen  
Kuma shochu from 1,000 yen  
Saké produced in Kumamoto from 1,200 yen



## 8 Choju-an Kumamoto Station C-4

長寿庵 熊本駅店



Kumamoto Station, the gateway to Kumamoto, is home to a famous ikinari dango store! Try our ikinari dango as a gift or a snack for your family. We also deliver to other regions of Japan.

Kumamoto Station Higo Yokamon Ichiba, 3-15-30, Kasuga, Nishi-ku, Kumamoto City  
TEL: 096-359-4647  
Hours: 9:00-20:00  
Parking available  
(Affiliated parking lot)  
open all year round

### Recommended

Ikinari dango, 160 yen each  
Grilled Ikinari dango, 250 yen  
Dorayaki, 150 yen





### 9 Suganoya Kumamoto Station - horse meat specialist C-4

馬肉専門店 菅乃屋 熊本駅店



The souvenir shop specializes in "horse meat sashimi and products." It carries a selection of popular, high-quality horse meat sashimi. Please stop by when you come to Kumamoto Station.

Kumamoto Station Higo Yokamon Ichiba, 3-15-30, Kasuga, Nishi-ku, Kumamoto City  
TEL: 096-355-2877

Hours: 9:00-20:00  
Parking available  
(Affiliated parking lot)  
open all year round

#### Recommended

Fresh horse sashimi "Fatty" (100g), 4,200 yen  
Fresh horse sashimi "Premium Marbled" (100g), 3,200 yen  
Fresh horse loin sashimi (200g) 3,600 yen



### 10 Okashi no Kobai Kumamoto Station shop C-4

お菓子の香梅 熊本駅店



The shop sells Japanese confectionaries that convey Kumamoto's history and culture, including "Homare no Jindaiko" and "Mushagaeshi." At the sales demonstration, visitors can taste the freshly baked Marukintsuba prepared by artisans.

Kumamoto Station Higo Yokamon Ichiba, 3-15-30, Kasuga, Nishi-ku, Kumamoto City  
TEL: 096-325-6777

Hours: 9:00-20:00  
Parking available  
(Affiliated parking lot)  
open all year round

#### Recommended

Happy Jindaiko Kumamon, 1,394 yen  
Higo Tsuba (Sanmenyaki Marukintsuba), a set of 8, 891 yen  
Soft Serve Jindaiko Ice Cream, (takeout only) 432 yen



### 13 Hanamarudo B-5

華まる堂



Sweet potato grown in Kumamoto is wrapped with sticky dough.

Sakuramachi Kumamoto Bus Terminal Concourse, 3-10, Sakuramachi, Chuo-ku, Kumamoto City  
TEL: 096-300-8116

Hours: 9:00 - 18:00  
Parking available (on-site/tariffs apply)  
open all year round

#### Recommended

Ikinari Dango (dark bean jam), 170 yen  
Chilled Ikinari Dango (a set of 4), 730 yen

### 14 Sonoya Suizenji

煎匠 そのや



We use eggs from the local Cocco Farm in Kumamoto. We are dedicated to hand-baking, and we demonstrate and sell our signature product, "Higo Mondo," one by one at our storefront. Please enjoy the freshly baked taste.

5-13, Suizenji Koen, Chuo-ku, Kumamoto City  
TEL: 096-380-6175

Hours: 10:00 - 16:00  
No parking  
Closed on Wednesdays & Sundays

#### Recommended

Higo Mondo, 8pc., 390 yen  
Higo Mondo, 8pc., individually wrapped, 540 yen  
Higo Mondo, 16pc., individually wrapped, 1,080 yen

### 11 Antagata Dokosa C-4

あんたがたどこさ



5% off \*Exclusions apply

Each confection is handmade by our confectioners. We offer a variety of confections, including the very popular "Higo Daiko," "Goma Daiko," bursting with the flavor of sesame seeds, and the old-fashioned "Suzume no Tamago."

Kumamoto Station Higo Yokamon Ichiba, 3-15-30, Kasuga, Nishi-ku, Kumamoto City  
TEL: 096-288-5801

Hours: 9:00-20:00  
Parking available (Affiliated parking lot)  
open all year round

#### Recommended

Higo Daiko, 5pc., Kumamon packet, 702 yen  
Suzume no Chocolate Tamago, 6pc., 540 yen  
Kuromame Rakka, 3pc., 389 yen

### 12 Kokindo JR Kumamoto Station C-4

菓舗 古今堂 JR 熊本駅店



We make our confections at the foot of Mt. Aso. We use only Aso milk and ingredients from Kumamoto Prefecture, making our products the perfect gift for that special person in your life. In particular, the rich cheese buns "Higokuni" are the most popular, with a wondrous texture that is almost like terrine.

Kumamoto Station Higo Yokamon Ichiba, 3-15-30, Kasuga, Nishi-ku, Kumamoto City  
TEL: 096-356-3577

Hours: 9:00-20:00  
Parking available  
(Affiliated parking lot)  
open all year round

#### Recommended

Rich cheese dumpling Higokuni, 6pc., 1,188yen  
Kumamoto Aso BATON, 6pc., 972 yen  
Premium cheese blanc 6pc., 972yen



### 15 Kumamoto Winery Kita-ku

熊本ワイン株式会社



The winery has enjoyed an excellent reputation in wine competitions. The shop sells a range of limited edition wines and cheese.

168-17, Izumi-machi, Kita-ku, Kumamoto City  
TEL: 096-275-2277

Hours: 10:00-17:00  
Parking available  
Closed on Wednesdays.

#### Recommended

Kikuka Chardonnay, 2,913 yen  
From the vault, 1,500 yen onwards  
Kyoho no Shizuku, 1,980 yen



### 16 Roadside Station Suika-no-Sato Ueki Ueki 2

道の駅 すいかの里植木



The roadside station is in Ueki-machi, famous for its water melons. It sells a variety of local products.

160-1, Iwano, Ueki-machi, Kita-ku, Kumamoto City  
TEL: 096-272-2333

Hours: 9:00-18:30  
Parking available  
Closed every 3rd Thursday of the month  
(Close the following non-holiday)

#### Recommended

Suika Hand-Baked Doughnut, 1pc., 180 yen  
A 500ml bottle of Water Melon-flavored Nigori Saké, 1,800 yen.  
Water melon (seasonal), market price.





## 17 Fudo Chikuwa Honpo Minami-ku

不動ちくわ本舗



This long-established shop has been in business for 165 years. In addition to its signature "Daifudo" (chikuwa on a bamboo skewer), the store offers tempura, karashi renkon (lotus root filled with mustard), and other items, making it the perfect place to pick up Kumamoto souvenirs.

505, Shimomiyaji, Jonanmachi, Minami-ku, Kumamoto City  
TEL: 0964-28-2038  
Hours: 8:30-18:00 (varies according to seasons)  
Parking available  
open all year round

### Recommended

Karashi Renkon from 600 yen  
Daifudo chikuwa on skewer, 340 yen

## 19 Fuji Bambi Kumamoto Station C-4

フジバンビ 熊本駅店



Brown Sugar Doughnut Stick is Kumamoto's signature confection! We are committed to using domestically produced flour to create familiar confections that will bring a smile to your face. Please stop by when you visit Kumamoto Station.

Kumamoto Station Higo Yokamon Ichiba, 3-15-30,  
Kasuga, Nishi-ku, Kumamoto City  
TEL: 096-359-5910  
Hours: 9:00-20:00  
Parking available (Affiliated parking lot)  
open all year round



### Recommended

Brown Sugar Doughnut Stick, 20pc., 950 yen  
Brown Sugar Doughnut Stick Hinokuni, 16pc. Packet, 850 yen  
Aso Jersey Milk Doughnut Stick, 20pc., 1,000 yen

## 18 Kiyomasa Seika Kumamoto Station C-4

清正製菓 熊本駅店



Kiyomasa Seika offers products that charmingly convey the history and culture of Kumamoto to people in and out of the prefecture through "confections that tell the story of Kumamoto," such as Chosen Ame. Be sure to try our new Kumamoto cheesecake, a product so popular that 10,000 of it were sold in its first month on the market.

Kumamoto Station Higo Yokamon Ichiba, 3-15-30,  
Kasuga, Nishi-ku, Kumamoto City  
TEL: 096-355-0303  
Hours: 9:00-20:00 open all year round  
Parking available (Affiliated parking lot)

### Recommended

Daitenshu Fukkatsu (a set of three types of famous confections), 1,000 yen  
Gekka no Kumamotojo Kumamon Ver. 15 pc., 1,200 yen  
Souffle Cheesecake (776 Cheesecake), 1,350 yen

## 20 Fukudaya Kumamoto Waguri-an C-4

福田屋 熊本和栗庵



Fukudaya Kumamoto Waguri-an (JR Kumamoto Station) offers a variety of confections made exclusively from locally-grown Japanese chestnuts. Kumamoto is a leading producer of high-quality chestnuts in Japan. We handle everything from sourcing the chestnuts to processing the paste and making the confections. We look forward to serving you with confections made from Kumamoto's Japanese chestnuts, such as "Kuri Senri," a Grand Prix winner in the 2018 'Nippon Zenkoku Gotochi Oyatsu Ranking' and our very popular "Kurizuki."

Kumamoto Station Higo Yokamon Ichiba, 3-15-30,  
Kasuga, Nishi-ku, Kumamoto City  
TEL: 0120-014-999 (Fukudaya main store / Weekdays 9:00 - 17:00)  
Hours: 9:00-20:00  
Parking available  
(Affiliated parking lot)  
open all year round

### Recommended

Kuri Senri, 5pc., 675 yen  
Kurizuki, 6pc., 1,260 yen

## 1 Wa Collection Mito Suizenji

和 collection 美都



Our kimono and yukata rental store for tourists is located on the approach to Suizenji Jojuen Garden. A rental includes a set of kimono or yukata with fitting and comes with an admission ticket to Suizenji Jojuen, a photo shoot in our studio, a complimentary Japanese pattern drawstring purse, and other gifts. New store opened at Josaien in January 2023.

4-3, Suizenji Koen, Chuo-ku,  
Kumamoto City  
TEL: 096-362-6439  
Hours: 10:00 - 17:00  
No parking  
Closed on Wednesdays



### Recommended

Kimono rental (Oct - May) 3,850 yen  
Yukata rental (Jun - Sep) 3,850 yen

## 3 Kichiji-en Resort Farm Ueki 3

観光農園 吉次園



You can enjoy picking fruits such as strawberries, grapes, apples, mandarin oranges, and pears throughout the year. Soft-serve ice cream and parfaits made with abundant fruits are also very popular. The farm is easily accessible, only 25 minutes by car from the center of Kumamoto!

556-1, Kitome, Uekimachi,  
Kita-ku, Kumamoto City  
TEL: 096-273-2544  
Hours: 10:00 - 17:00  
(last admission 16:00)

Parking available  
irregular holidays

### Recommended

All-you-can-eat strawberry picking from 1,400 yen (seasonal)  
All-you-can-eat grape picking from 1,080 yen (depending on variety)  
Apple picking - take-home, 1kg, 670 yen



Benefits you will receive by presenting this booklet.

## 2 Yuhoen Fruit Land Nishi-ku

優峰園 フルーツランド



100 yen off admission from Jan to Oct

Our popular activities include a seasonal fruit picking experience and, in the summer, a rainbow trout fishing experience taking advantage of Mt. Kinbo's spring water and somen nagashi.

1144, Kawachimachitake, Nishi-ku, Kumamoto City  
TEL: 096-288-1545

Hours: 9:00-17:00 Parking available  
Closed [Fruit garden] Mondays (Oct-Nov)  
Wednesdays (Dec-Sep)

[Restaurant] Wednesdays

### Recommended

All-you-can-eat fruit picking, 1,600 yen  
Rainbow trout fishing experience, one catch, 650 yen  
Somen nagashi from 600 yen per person



## Hot Spring Baths in the City of Kumamoto

Ueki Onsen Association 096-274-6830

### Taxi

Kumamoto taxi 0120-0120-86

Kumamoto taxi (Tourist phone number) 096-379-8182

Kumamoto-kotsu taxi 0120-369-686

Higo-daiichi kotsu 096-354-2222

Naka Kyushu Izumi Taxi 096-365-0611

### Car rental

Kumamoto Nissan Rent-a-Car 096-324-6363

TOYOTA Rent-a-Car 096-388-7171



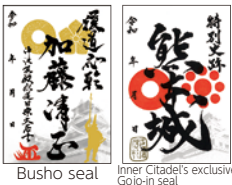


1-1, Honmaru, Chuo-ku, Kumamoto City (inner citadel)  
TEL: 096-327-8927  
Hours: 9:00 - 16:30  
Parking available (Ninomaru Parking lot, fee paying)  
Closed on December 30 and 31 (TBC)  
Transport: Kumamoto Castle / Ninomaru Parking bus stop

## A Kumamoto Castle Honmaru Rest Area D-3

熊本城本丸お休み処

The rest area is located directly in front of the castle keep. It offers souvenirs of your visit, such as the "Gojo-in" (castle seal) and products exclusive to Kumamoto Castle.



Busho seal  
Inner Citadel's exclusive Gojo-in seal



2-3, Ninomaru, Chuo-ku, Kumamoto City (Ninomaru Parking area)  
TEL: 096-321-6150  
Hours: 9:00 - 17:00  
Parking available (Ninomaru Parking lot, fee paying)  
Closed on December 30 and 31 (TBC)  
Transport: Kumamoto Castle / Ninomaru Parking bus stop

Busho seal is available for purchase.

## B Kumamoto Castle Ninomaru Rest Area C-3

熊本城二の丸お休み処

In addition to a model of Kumamoto Castle and photo panel displays, there is a donation box for Kumamoto Castle disaster relief. Visitors can also view a video about the restoration work.



Kumamoto Castle seal



5-14-2, Kengun, Higashi-ku, Kumamoto City  
TEL: 096-288-7530  
Hours: 9:00 - 16:45 (The zoo closes at 17:00)  
Parking is free on weekdays only.  
Closed on Mondays, but the shop is open on the 4th Monday of the month and closes on Tuesday (or the following non-holiday weekday if Tuesday is a holiday)  
Transport: Dobutsuen-mae or Doshokubutsuen Nishiguchi bus stop, and Doshokubutsuen Iriguchi tram stop.

## C Kumamoto Zoo Shop Higashi-ku

熊本市動植物園売店

The store offers various products to commemorate your visit, including red panda goods popular with children and original products from Kumamoto City Zoological and Botanical Gardens.

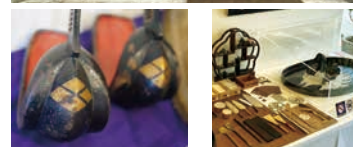


3-2, Furukyo-machi, Chuo-ku, Kumamoto City TEL: 096-273-7840  
Hours: 9:00 - 17:00 (Last admission is 16:30)  
There is no parking, so please use the Sanno-maru Parking lot (paid)  
Closed on Mondays (Closed the following day if Monday is a public holiday), end of the year and New Year holidays (Dec 29 - Jan 3), and for maintenance work.  
Transport: Hakubutsukan/Kyu Hosokawa Gyobu-tei bus stop, Sugidomo tram station.

## D Kumamoto Museum Shop B-2

熊本博物館ミュージアムショップ

The shop offers variety of items that excite curiosity such as original designed postcards related the museum's exhibit, stationary, experiment and craft kits.



6-24, Suizenji Koen, Chuo-ku, Kumamoto (within Gentakuji parking lot)  
TEL: 080-3498-8268  
Hours: 9:00 - 16:30  
There is no private parking, so please use parking lots nearby (for a fee)  
Closed on Wed (if holiday, Thursday is closed), End of the year will be closed  
Transport: Bus stop: Kokufu - Suizenji Koen-mae Tram: Kokufu - Suizenji Koen

## E Yuusuitei Suizenji Higo Hosokawa cultural center Suizenji

水前寺肥後細川文化発信拠点 湧水亭

This facility offers many opportunities for visitors to enjoy exhibits of works and tools associated with the culture of the Higo Hosokawa family, who served as lords of Kumamoto for many years after the Kato family was attained, as well as sales of products made from edible gynera.



## City of Kumamoto Tourism Survey is underway

Please fill out the web survey for tourists. (Duration: about 2 minutes)  
Present your completed questionnaire at any of the six locations listed on the right to receive an original Kumamoto Castle postcard!!

We'd love to hear from you!



Scan the QR code to answer!



- Kumamoto Castle Honmaru Rest Area
- Kumamoto Castle Ninomaru Rest Area
- Kumamoto Museum Shop
- Kumamoto Zoo Shop
- Sakuranobaba Johsaien Tourist Information Center
- Kumamoto Station Tourist Information Center

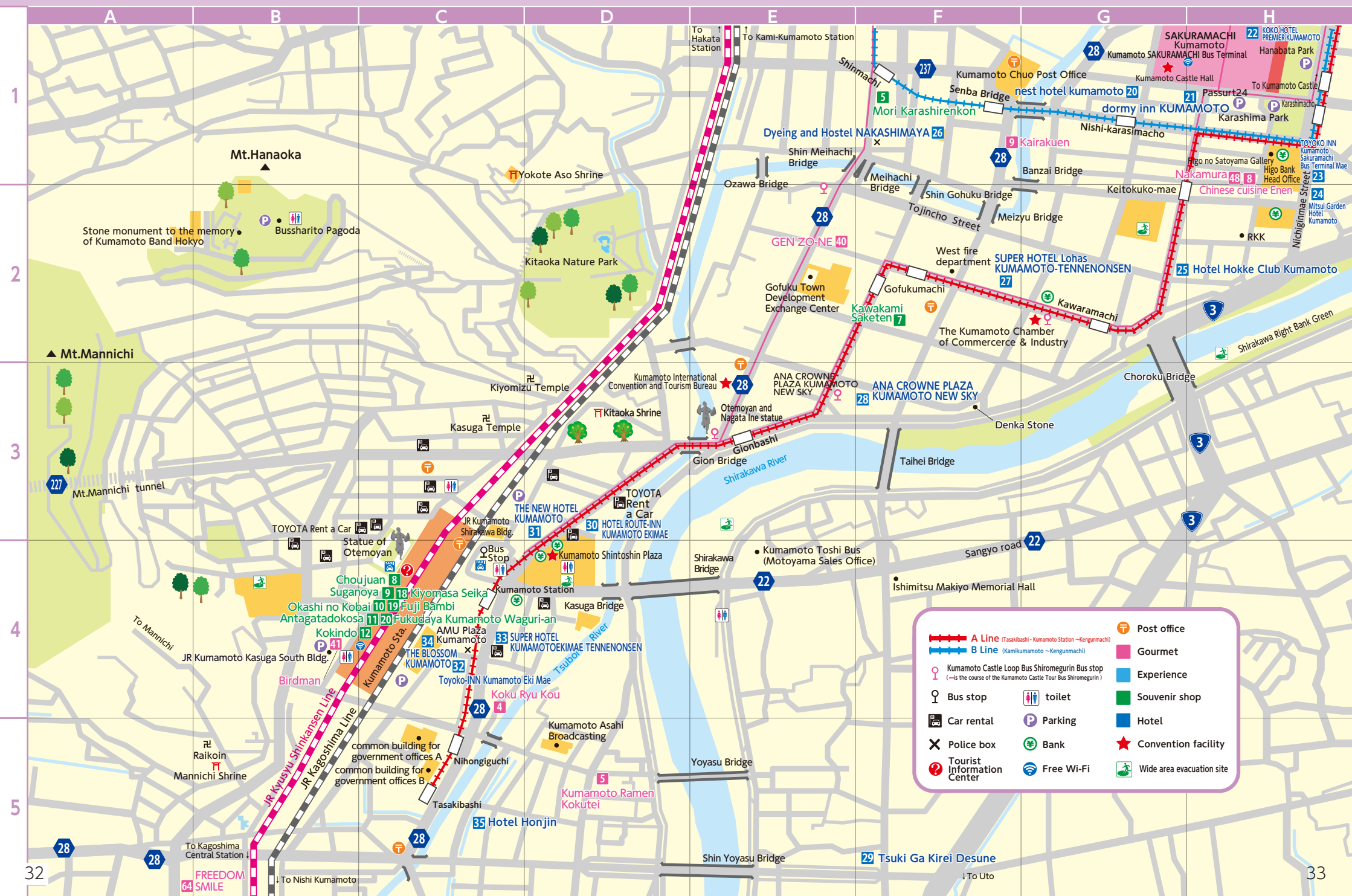


	No.	Hotel/Ryokan	Address	MAP	TEL	Number of guests	Room type/rate	Parking lot rates
Central City	1	<b>KKR HOTEL KUMAMOTO</b> KKRホテル熊本 City Hotel	3-31, Chibaijo-machi, Chuo-ku, Kumamoto City	D2	096-355-0121	54	*Call for rates	1,000yen
	2	<b>ARK HOTEL KUMAMOTOJOMAE</b> アークホテル熊本城前 Business Hotel	5-16, Jyoto-machi, Chuo-ku, Kumamoto City	E2	096-351-2222	222	*Call for rates	900yen Multi-story parking, vehicle-type restrictions apply
	3	<b>&amp; and COMFY HOTEL Kumamotojo view</b> アンドコンフォホテル熊本城ビュー Business Hotel	5-3, Jyoto-machi, Chuo-ku, Kumamoto City	E3	096-311-7070	98	*Call for rates	Information provided at the shared parking lot (fee paying)
	4	<b>KUMAMOTO HOTEL CASTLE</b> 熊本ホテルキャッスル City Hotel	4-2, Jyoto-machi, Chuo-ku, Kumamoto City	E3	096-326-3311	179	*Call for rates	1,000yen
	5	<b>Kumamoto Wasuki Tsukasakan</b> 熊本和数寄司館 City Hotel	7-35, Kamitori-cho, Chuo-ku, Kumamoto City	E3	096-352-5101	59	T 18,000～ 和 18,000～ *The prices change by the number of people in the party.	Information provided at the shared parking lot
	6	<b>hotel nikko kumamoto</b> ホテル日航熊本 City Hotel	2-1, Kamitori-cho, Chuo-ku, Kumamoto City	E3	096-211-1111	191	T 35,090～ SU 87,120～ W 24,200～ 和 72,600～	Information provided at the shared parking lot (fee paying)
	7	<b>TOYOKO INN Kumamoto Jyo Tori chosuji</b> 東横INN 熊本城通町筋 Business Hotel	1-1, Suidocho, Chuo-ku, Kumamoto City	F3	096-325-1045	199	S 6,100～ T (Two guests per room)8,600～ EW (Two guests per room)7,600～	500yen 16:00 - 10:00 the next morning *First-come-first-served.
	8	<b>HOTEL WING INTERNATIONAL Select Kumamoto</b> ホテルウィングインターナショナルセレクト熊本 Business Hotel	2-13, Suidocho, Chuo-ku, Kumamoto City	F3	096-325-1000	152	*Call for rates	Affiliated parking lot 1,100yen
	9	<b>HOTEL MIELPARQUE KUMAMOTO</b> ホテルメルパルク熊本 City Hotel	14-1, Suidocho, Chuo-ku, Kumamoto City	F3	096-355-6311	60	*Call for rates	Call for rates
	10	<b>GR HOTEL GINZADORI</b> ジーアールホテル銀座通 Business Hotel	7-11, Chuogai Chuo-ku, Kumamoto City	E4	096-319-8888	70	S 5,300～ T 6,900～ W 5,900～	12 vehicles 1,100yen Motorcoaches are permitted
	11	<b>R&amp;B Hotel Kumamoto Shimotori</b> R&Bホテル熊本下通 Business Hotel	22-18, Shimotori, Chuo-ku, Kumamoto City	E4	096-356-7272	221	S 5,000～	No parking
	12	<b>SOTETSU GRAND FRÉSA KUMAMOTO</b> 相鉄グランドフレッサ熊本 Business Hotel	2-2-23 Shimotori, Chuo-ku, Kumamoto City	E4	096-353-0203	247	S 6,000 T 8,000～ W 7,000～ Tri 9,000～	Information provided at the shared parking lot
	13	<b>Washington Hotel Plaza Kumamoto</b> 熊本ワシントンホテルプラザ Business Hotel	2-3-10, Shimotori, Chuo-ku, Kumamoto City	E5	096-355-0410	350	*Call for rates	1,100yen
	14	<b>KUMAMOTO GREEN HOTEL</b> 熊本グリーンホテル Business Hotel	12-11, Hanabata-cho, Chuo-ku, Kumamoto City	D4	096-325-2222	78	S 8,000 SW 9,000 T 12,000	Information provided at the shared parking lot
	15	<b>TOYOKO INN Kumamoto Shinshigai</b> 東横INN熊本新市街 Business Hotel	3-25, Shinshigai, Chuo-ku, Kumamoto City	D4	096-324-1045	220	S 6,700 T 9,700 W 9,200 EW 8,200	800yen *First-come-first-served.
	16	<b>Richmond Hotel Kumamoto-Shinshigai</b> リッチモンドホテル熊本新市街 Business Hotel	6-16, Shinshigai, Chuo-ku, Kumamoto City	D4	096-312-3511	158	*Call for rates	Call for rates
	17	<b>COMFORT HOTEL KUMAMOTO SHINSHIGAI</b> コンフォートホテル熊本新市街 Business Hotel	2-10, Shinshigai, Chuo-ku, Kumamoto City	D4	096-211-8411	157	S 5,400～ T 8,000～ W 7,000～	Information provided at the shared parking lot
	18	<b>REF Kumamoto by VESSEL HOTELS</b> レフ熊本byベッセルホテルズ Business Hotel	7-2, Shinshigai, Chuo-ku, Kumamoto City	D4	096-328-7777	229	S 9,000～ T 12,500～ W 9,500～ Tri 13,000～	Information provided at the shared parking lot
	19	<b>Kumamoto Tokyu REI Hotel</b> 熊本東急REIホテル Business Hotel	7-25, Shinshigai, Chuo-ku, Kumamoto City	C4	096-322-0109	140	*Call for rates	Information provided at the shared parking lot (fee paying)
	20	<b>nest hotel kumamoto</b> ネストホテル熊本 Business Hotel	4-39, Karashima-cho, Chuo-ku, Kumamoto City	B4	096-322-3911	201	S 8,500～ T 13,000～ W 13,000～ Tri 18,000～	1,000yen
	21	<b>dormy inn KUMAMOTO</b> 天然温泉 六花の湯 ドーミーイン熊本 Business Hotel	3-1, Karashima-cho, Chuo-ku, Kumamoto City	C4	096-311-5489	291	*Call for rates	1,200yen
	22	<b>KOKO HOTEL PREMIER KUMAMOTO</b> KOKO HOTEL Premier 熊本 Business Hotel	3-20, Sakuramachi, Chuo-ku, Kumamoto City	C4	096-355-6700	205	T 13,000～ W 9,000～	Affiliated parking lot

Central City	23	<b>TOYOKO INN Kumamoto Sakuramachi Bus Terminal Mae</b> 東横INN 熊本桜町/バスターミナル前 Business Hotel	1-24, Kouyaima-machi, Chuo-ku, Kumamoto City	C5	096-322-1045	152	S 6,000～ T 9,000～ W 8,500～ EW 7,500～	500yen
	24	<b>Mitsui Garden Hotel Kumamoto</b> 三井ガーデンホテル熊本 Business Hotel	1-20, Kouyaimachi, Chuo-ku, Kumamoto City	D5	096-352-1131	226	*Call for rates	1,100yen
	25	<b>Hotel Hokke Club Kumamoto</b> ホテル法華クラブ熊本 Business Hotel	20-1, Tori-cho, Chuo-ku, Kumamoto City	C5	096-322-5001	147	S 7,700 T 14,300(Two guests)	1,100yen
	26	<b>Dyeing and Hostel NAKASHIMAYA</b> 染物と宿の中島屋 Guesthouse	2-11-6, Shin-machi, Chuo-ku, Kumamoto City	A4	096-202-2020	7	S 3,480～	No parking
	27	<b>SUPER HOTEL Lohas KUMAMOTO-TENNENONSEN</b> スーパーホテルLohas熊本天然温泉 Business Hotel	1-30-1, Uoya Chuo-ku, Kumamoto City	B5	096-351-9000	249	S 6,480～ Economy twin 11,000～	500yen *First-come-first-served.
	28	<b>ANA CROWNE PLAZA KUMAMOTO NEW SKY</b> ANAクラウンプラザホテル熊本ニュースカイ City Hotel	2, Higashimaidajimachi, Chuo-ku, Kumamoto City	F3	096-354-2111	187	*Call for rates	1,500yen
Kumamoto Station Area	29	<b>Tsuki Ga Kirei Desune</b> 月が綺麗ですね Guest house	487, Yoyasumachi, Chuo-ku, Kumamoto City	F5	080-8411-5251	4	S 3,800～ 和 3,800～ 洋 4,200～	No parking
	30	<b>HOTEL ROUTE-INN KUMAMOTO EKIMAE</b> ホテルルートイン熊本駅前 Business Hotel	1-14-19, Kasuga, Nishi-ku, Kumamoto City	D3	050-5847-7557	170	S 6,600～ SW 11,500～ T 13,500～	500yen *First-come-first-served.
	31	<b>THE NEW HOTEL KUMAMOTO</b> ザ・ニューホテル熊本 City Hotel	1-13-1, Kasuga, Nishi-ku, Kumamoto City	D3	096-326-1111	123	*Call for rates	Information provided at the shared parking lot
	32	<b>TOYOKO INN Kumamoto Eki Mae</b> 東横INN熊本駅前 Business Hotel	2-8-10, Kasuga, Nishi-ku, Kumamoto City	C4	096-351-1045	331	S 6,200～ T 9,200～ W 8,700～ EW 7,700～ DXT 12,200～	500yen
	33	<b>SUPER HOTEL KUMAMOTOEKIMAE TENNENONSEN</b> スーパーホテル熊本駅前天然温泉 Business Hotel	2-3-23, Kasuga, Nishi-ku, Kumamoto City	C4	096-324-9000	100	S 6,500～ T 8,700～ W 8,500～	Affiliated parking lot 500yen *First-come-first-served.
	34	<b>THE BLOSSOM KUMAMOTO</b> THE BLOSSOM KUMAMOTO City Hotel	3-15-26, Kasuga, Nishi-ku, Kumamoto City	C4	096-327-8763	203	*Call for rates	Affiliated parking lot 1,000yen
	35	<b>Hotel Honjin</b> ホテル本陣 Ryokan	2-8-1, Nihongi, Nishi-ku, Kumamoto City	C5	096-354-9191	40	T 10,000～	Free
	36	<b>Youthpia Kumamoto Kumamoto-ken Seinenkaikan</b> ユースピア熊本(熊本県青年会館) Publicly operated inn	3-17-15, Suizenji, Chuo-ku, Kumamoto City	Suizenji	096-381-6221	14	T 3,800 和 3,100	Free
	37	<b>Smile Hotel Kumamoto Suizenji</b> スマイルホテル熊本水前寺 Business Hotel	1-2-20, Suizenji, Chuo-ku, Kumamoto City	Suizenji	096-383-8410	85	S 4,800～ T 7,400～ Family Twin 9,200～	800yen～ *In order of arrival on the day
	38	<b>Matsuyabekkan</b> 松屋別館 Business Hotel	5-5-1, Suizenji, Chuo-ku, Kumamoto City	Suizenji	096-213-1331	52	S 5,500～ T 12,000～ 和 6,500～	Free
Suizenji Area	39	<b>Ryotei Matsuyahonkan Suizenji</b> 旅亭 松屋本館 Suizenji Ryokan	23-1, Suizenji Koen, Chuo-ku, Kumamoto City	Suizenji	096-381-1331	13	*Call for rates	Free 8 vehicles Other temporary parking lots are available
	40	<b>Hotel Kumamoto Terrsa</b> ホテル熊本テルサ City Hotel	28-51, Suizenji Koen, Chuo-ku, Kumamoto City	Suizenji	096-387-7777	62	S 6,900 T 11,620 W 8,080 和 14,310	700yen
	41	<b>Suizenji Mutual Aid Hall Gratia</b> 水前寺共済会館 グレーシア Public Inn	1-33-18, Suizenji, Chuo-ku, Kumamoto City	Suizenji	096-383-1281	31	S 6,240 T 6,100 和 6,100	Free
	42	<b>Monohana</b> 湧泉の宿 藻乃花 Ryokan	6-74, Kuwamizuhomachi, Chuo-ku, Kumamoto City	Suizenji	096-340-0727	5	和 12,100～	Free
	43	<b>HOTEL PEACEFUL</b> ホテルピースフル Business Hotel	3-11-136, Shimomabe, Higashi-ku, Kumamoto City	Nishihara Higashi-ku	096-388-1188	87	S 4,730～ SW 4,950～ T 8,800～ 和 4,180～ *The rates are for four people.	Free Oversized vehicles, except for groups, are charged extra.
	44	<b>KIKUNAN ONSEN U-BELL HOTEL</b> 菊南温泉ユウベルホテル City Hotel	3-10-1, Tsuruhada, Kita-ku, Kumamoto City	Kita-ku	096-344-5600	86	*Call for rates	Free
	45	<b>Ryokan yayanoyu</b> 旅館 ややの湯 Ryokan	366, Yonetsuka, Uekimachi, Kita-ku, Kumamoto City	Ueki 1	096-274-6383	6	和 28,000～ (1night 2meals /per person)	Free 50 vehicles

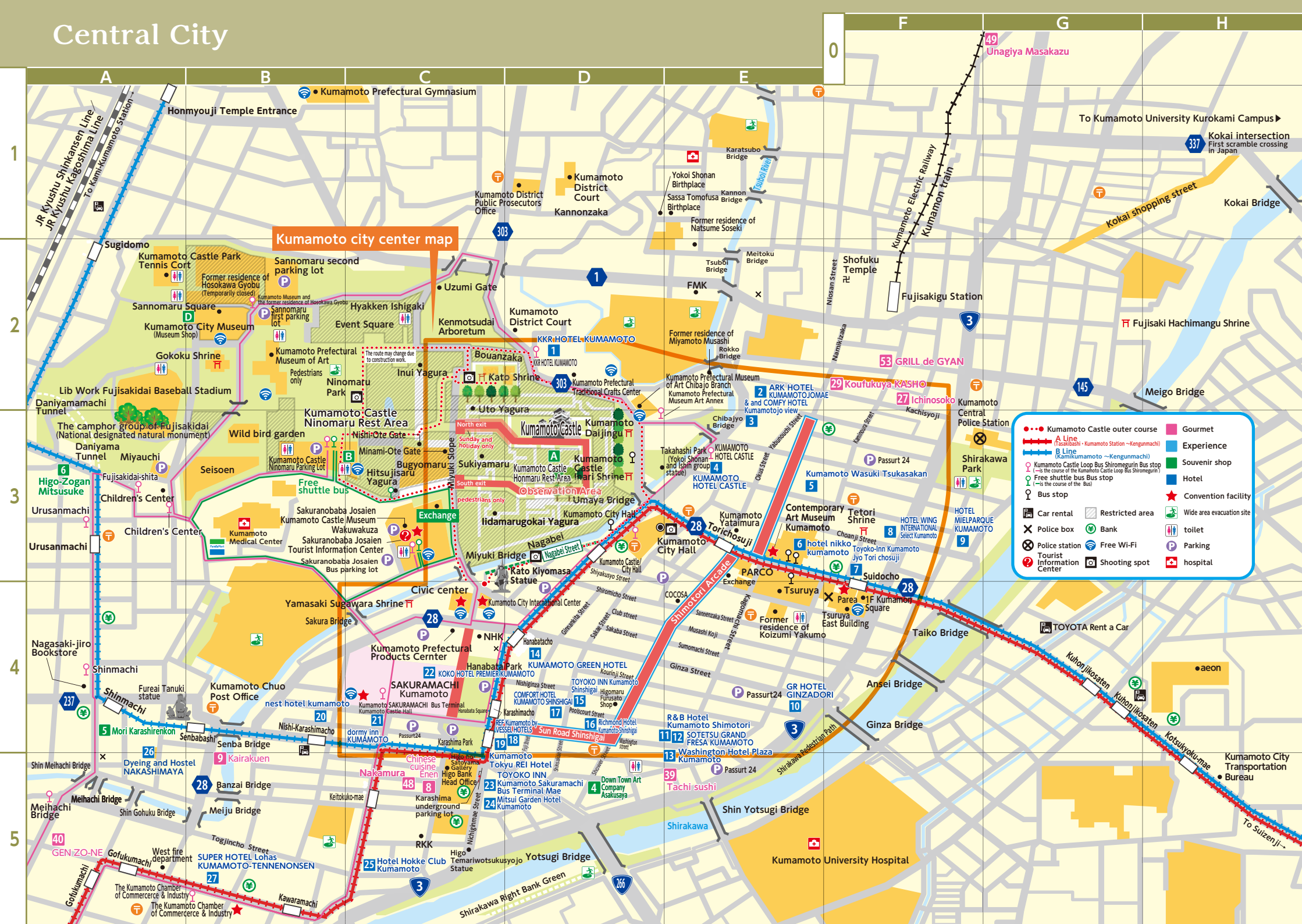


# Kumamoto Station Area



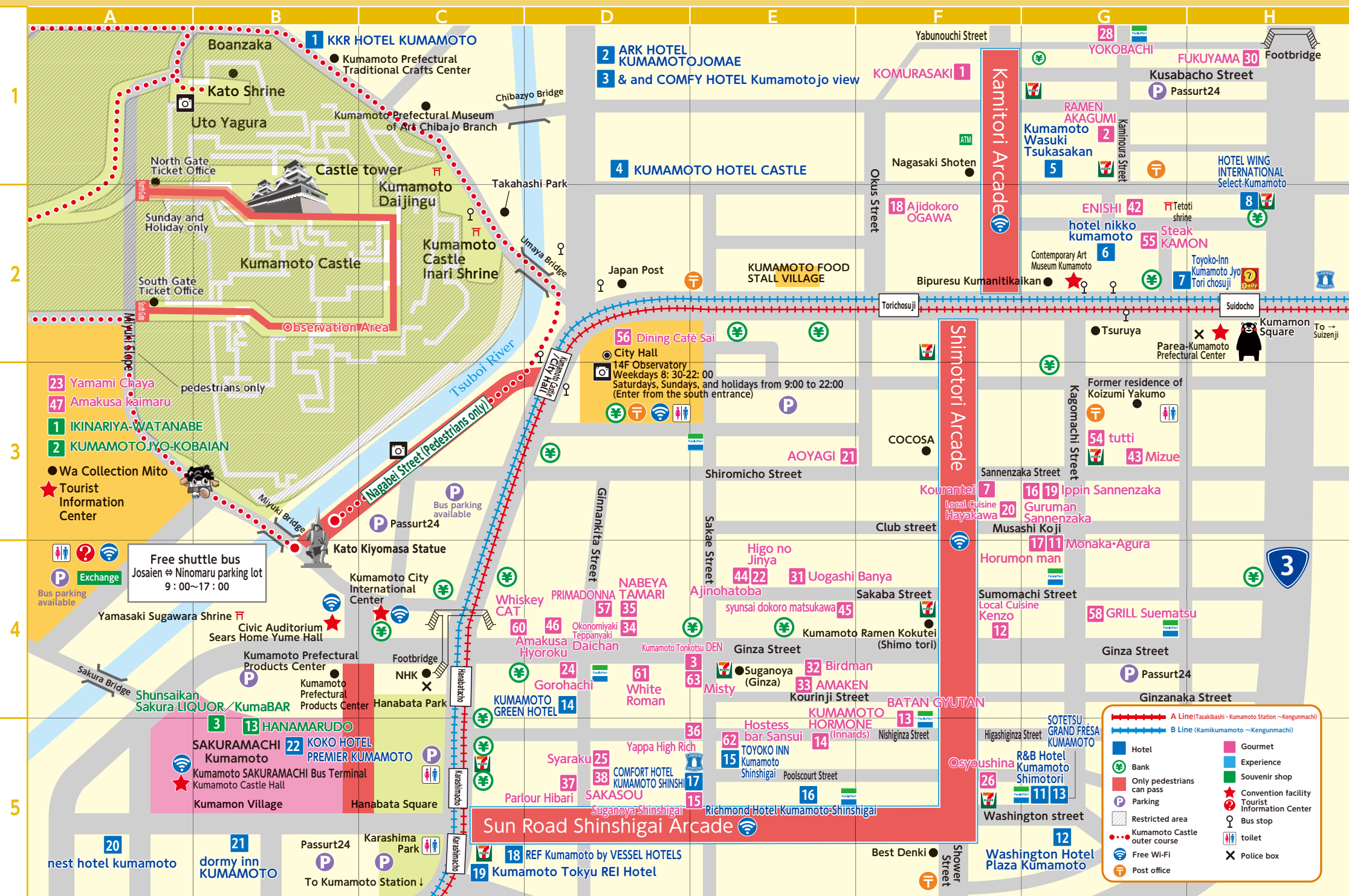


# Central City





# Downtown Area





## Suizenji Area



8-1, Suizenji Koen, Chuo-ku, Kumamoto City  
Open all year  
8:30 - 17:00 (Last entry 16:30)

400 yen for persons 16 years and over, 200 yen for persons 6 to 15 years old.  
10% off admission fee for a group of 30 or more

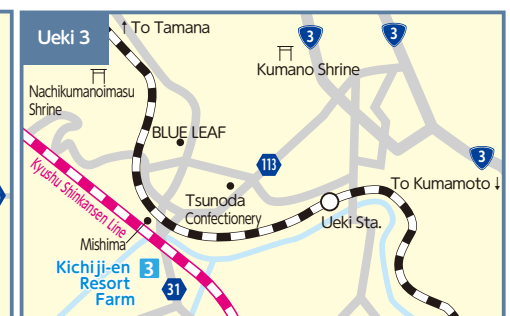
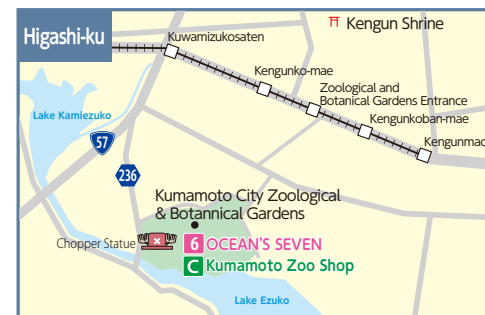
\*Admission for disability certificate holders: 200 yen for persons 16 years and over, 100 yen for persons 6 to 15 years old.  
Alight at Suizenji Koen tram station and walk for approximately 4 minutes.

## Suizenji Jojuen Garden

A circuit-style garden overflowing with greenery and ambience

The garden came into being when Hosokawa Tadatoshi, the third successor of the Higo Hosokawa family, who became the first lord of the Kumamoto domain in 1632, built a tea house. It was later completed at roughly the same scale as today's when Tsunetoshi, the third domain lord, took over. The garden, centering on a pond fed by subsoil water from Mt. Aso, is surrounded by gently undulating mounds and rocks partially submerged in water, allowing visitors to enjoy the beauty of nature and the garden in all four seasons.

## Suburbs





私は日本語がわかりませんので、これを使用させてください。  
I don't speak Japanese, so I would like to use this page.

はい Yes

あります We have

いいです good



いいえ No

ありません We don't have

だめです no good

0 1 2 3 4 5

6 7 8 9 10

百 hundred

千 thousand

万 ten thousand

円 yen

「 」人です

「 」people.

「テーブル席／畳の席」をお願いします。

I would like to sit "at a table/on a tatami mat".

メニューをください。

Can I see the menu?

「あれ / これ / おすすめ」は何ですか？

What is "that/ this/ your recommendation"?

辛いですか？

Is it spicy?

「 」は食べられません。

I can't eat「 」.

これはいくらですか？

How much is this?

「 」はどこですか？

Where is「 」？

何人前ですか？

How many serving is this?

注文したものと違います

That isn't my order.

注文したものがまだ来ません。

My order hasn't come yet.

お会計をお願いします。

Can I have the check please?

別々にお会計をお願いします。

We would like separate bills, please.

このクレジットカードは使えますか？

Do you accept this credit card?

小皿 small plate	スプーン spoon	魚 fish	卵 eggs	飲み物 drink	トイレ lavatory
グラス glass	フォーク fork	牛肉 beef	生もの raw	アルコール alcohol	トイレ rest room
灰皿 ashtray	ナイフ knife	鶏肉 chicken	スープ soup	大きい big	店内が「暑い」 this place is hot
おしぼり hand towel	野菜 vegetables	豚肉 pork	調味料 seasoning	小さい small	店内が「寒い」 this place is cold
箸 chopsticks	果物 fruits	馬肉 horsemeat	水 water	会計 bill	



## Information



Kumamoto Station Tourist Information Center

### 【Address】

3-15-30, Kasuga, Nishi-ku, Kumamoto City  
(inside of JR Kumamoto Station)

TEL: 096-327-9500

Hours: 9:00~17:30

Open all year round

English-speaking staff available

1-Day tickets Available



Sakuranobaba Josaen Tourist Information Center

### 【Address】

1-1-3, Ninomaru, Chuo-ku, Kumamoto City  
(inside of Sakuranobaba Johsaien)

TEL: 096-322-5060

Hours: 9:00~17:30

Closed from 12/30 to 12/31

English-speaking staff available

1-Day tickets Available



Free Wi-Fi Spot



Free Wi-Fi Spot



**Kumamoto International Convention and Tourism Bureau**

一般財団法人熊本国際観光コンベンション協会



〒860-0041

Senju Bldg. 5F, 4-30-1 Saikumachi, Chuo-Ku, Kumamoto city

TEL 096-359-1788 FAX 096-359-8520

URL <https://kumamoto-icb.or.jp/>

E-mail: [kumacomm@kumamoto-icb.or.jp](mailto:kumacomm@kumamoto-icb.or.jp)

Recruiting participating stores!!

\*The information printed herein is correct as of February 2023.

\*Please note that opening hours and closures are subject to change due to COVID-19 restrictions.

\*All prices are inclusive of tax.